

1:1
CLASSIC
LASH
TRAINING
MANUAL

By tiffanya aksenoff

Copyright 2023 by Lashes by Tiffany

1:1 VOLUME LASH TRAINING MANUAL BY TIFFANY AKSENOFF

All Rights Reserved. The information present in this training manual has been prepared based on industry experience and previous learning. No part of this book is to be reproduced or transmitted in any form or by any means, electronic or mechanical, including photocopying, recording, or by any information storage and retrieval system, without the written permission of Lashes by Tiffany, except when permitted by law.

While Lashes by Tiffany does its best to adequately train her clients with this extensive training manual, reliance on any of this information is taken at your own risk.

The information presented herein represents the views of the author as of the date of publication. This book is presented for informational purposes only. Due to the rate at which conditions change, Lashes by Tiffany reserves the right to alter and update opinions and information at any given time. While every attempt has been made to verify the information in this book, the author does not assume any responsibility for errors, inaccuracies, or omissions. Lashes by Tiffany does not accept any responsibility for the misrepresentation of the information contained within this training guide.

A breach of copyright is recognised as a criminal offence and any form of breach will result in prosecution with heavy compensation claims.

COPYRIGHT

TABLE OF *Contents*

Introduction to Volume Lash Extensions	04
Volume Tweezer breakdown	08
Fanning Methods	11
The perfect Lash Fan	17
Troubleshooting Split Fans	21
Pro-making Lash Fans	23
Infills	25
Outgrown Lashes and Removal	26
Lash Mapping	24
Lash Direction and Framing	27
Lash Layering	29
Hybrid Fans	32

CONTENTS

WELCOME & CONGRATULATIONS



Lashes by Tiffanya would like to Thank You for joining our Volume Lash Training Course and trusting us to teach you a absolutely anything and everything needed to be able to apply Volume Extensions.

Now this is the fun part of lashing!! By now you would know the foundations of Lash Extensions as well as correct application. This Manual will detail enough insight into understanding the fundamentals of Volume Lashes for you to feel confident and venture on to starting up your own busines.



INTRODUCTION TO VOLUME LASH EXTENSIONS

What are Volume lashes?

- Volume Lash Extensions are multiple finer/thinner lash extensions fanned out and applied to one natural lash.
- Volume lashes are handmade fans generally made out of 2-6 lashes each
- This allows for ultimate customisation of sets as well as a fuller and fluffier look
- Gives the illusion that more lashes are growing from one spot
- As opposed to a Classic Set where lashes are 0.15-0.20mm thickness, Volume lashes have a diameter of 0.05-0.10mm weighing a lot less than a classic lash

Why do clients choose Volume over Classic?

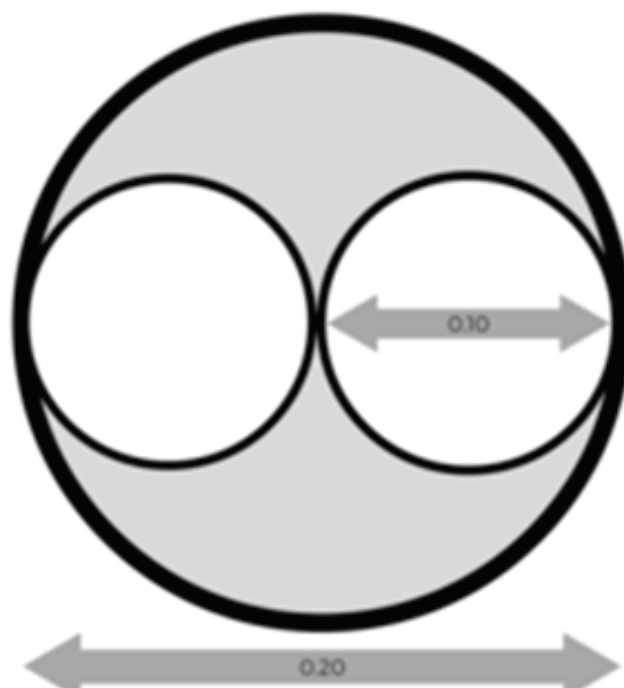
- Volume lashes allow clients with sparse and clients with gaps in their lash line to enjoy a fuller and denser look
- Volume lashes can be mixed with Classic to create a Hybrid Set
- Volume lashes tend to have better retention, meaning they last longer. This is because the multiple fans are able to be wrapped and provide more of a bonded surface
- They are not just for clients who are wanting to achieve an ultra-dark full set, they can be natural looking as well, particularly for clients with not as many natural lashes
- They are a great option for any client

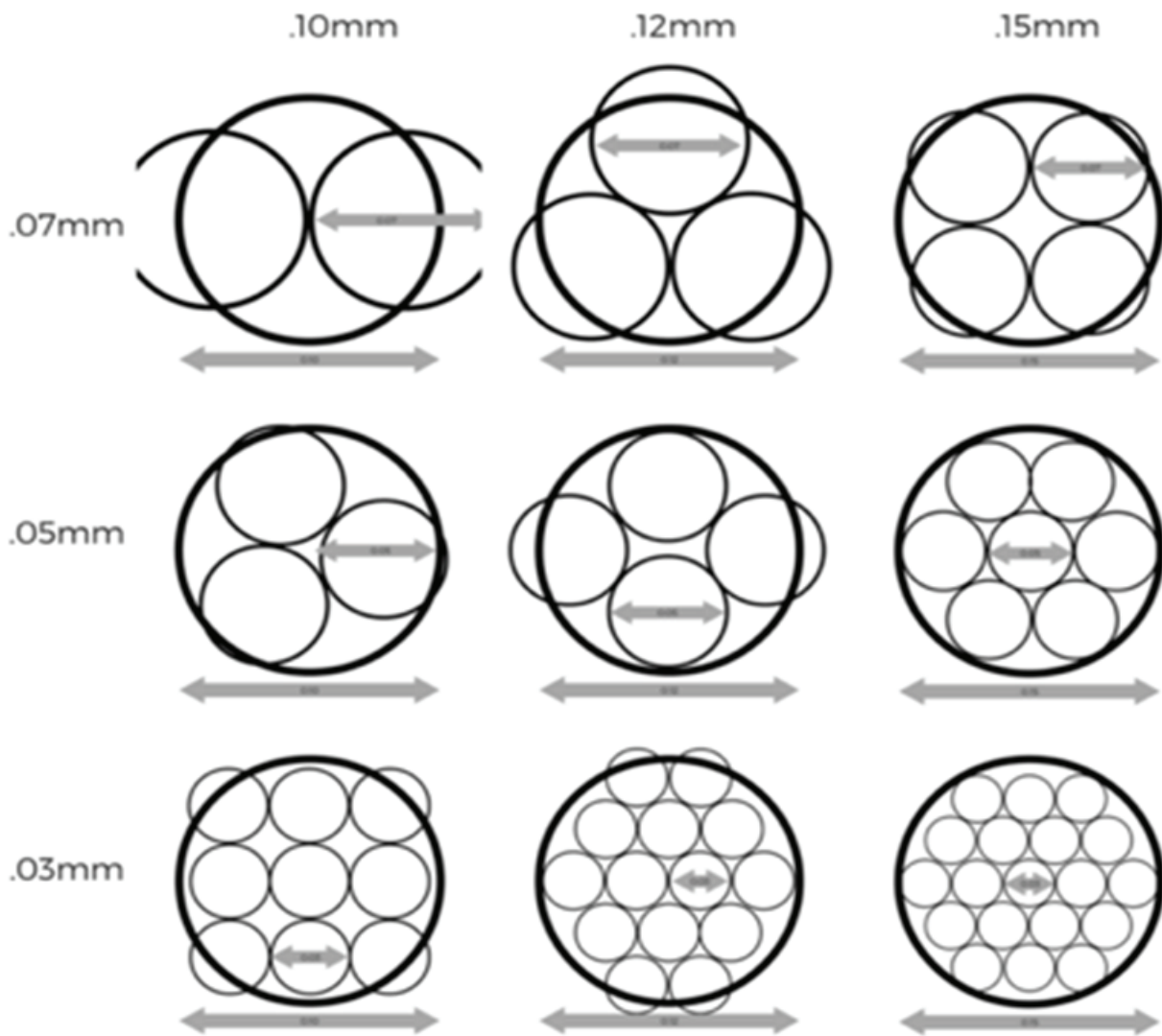
Why do clients choose Volume over Classic?

- Volume lashes allow clients with sparse and clients with gaps in their lash line to enjoy a fuller and denser look
- Volume lashes can be mixed with Classic to create a Hybrid Set
- Volume lashes tend to have better retention, meaning they last longer. This is because the multiple fans are able to be wrapped and provide more of a bonded surface
- They are not just for clients who are wanting to achieve an ultra-dark full set, they can be natural looking as well, particularly for clients with not as many natural lashes
- They are a great option for any client

AUTONOMY OF VOLUME FANS

- The actual thickness of the Lash Extensions themselves also dictates how many lashes can be used in a fan or bouquet. The rule of thumb is that the thinner or lighter the lash extension is, the more can be used in a single fan.
- 2D means 2 Lashes make up the fan, 3D means 3 and so on
- For 2-6D Volume, you must use lashes with a diameter between 0.05mm and 0.10mm lashes
- The most important thing to know about Volume Lashes is the safe and correct and what the equivalent weight would be if using Classic Lashes
- You must be able to understand the difference between weight and lash diameter
- For example: The above is a cross-section of a Single eyelash Extension that would be used for a Classic Set. The individual lash has a diameter of 0.20mm. The two smaller circles in the middle are 2 lashes with a diameter of 0.10mm which you think would make up the same weight as a 0.20mm lash. However, there is obvious negative space meaning that the lashes weigh less and therefore you have the ability to add more 0.10mm lashes to equate to 0.20mm
- Always consider the lengths used by assessing the strength of your client's natural lash.





The weight of each Lash Extension

0.20mm- .00030g

0.15mm- .00015g

0.12mm- .00012g

0.10mm- .00010g

0.07mm- .00007g

0.05mm- .00003g

0.03mm- .00002g

VOLUME TWEEZER BREAKDOWN

- Here we discover that one tweezer/tool doesn't do it all. There are various tweezers with all different purposes and it really is personal preference and what you find best works for you.
- Straight tweezers or Tweezers that are mostly straight with a slight curve are for Isolation whereas a Hook/L Shape or Boot shape tweezer are usually the most desirable for a Volume Set of Extensions
- This will ensure that you are able to pick up the extension as parallel to the strip as possible ensuring you have complete stability and control when making the fan/picking it up
- You can never have too many tweezers. Having 2-3 pairs allows you to rotate in between clients and use a properly cleaned tweezer each time round. It also ensures that incase one tweezer is dropped/ damaged during application you will always have an identical back up pair.
- The most time-consuming thing is finding the right volume tweezer that works for you. There are a few main factors when it comes to determining a good Volume Tweezer. These are: The tension in the tip, the sweet spot and the length of the tweezer

Tension in the tip

- The tip of the tweezer must be able to close 100% of the way at the tips with no recognisable bends/ bluntness to them
- When squeezed they should have a nice spring to them and not be too loose or too stiff as this will make it impossible to lash
- If the tweezer has been dropped, has excess glue on the tip, or has simply been overused and is no longer /sharp anymore this means that you are due for a new pair of tweezers

Sweet spot/pick up point

- You must be able to indicate where the sweet spot is on the pair of tweezers you are using. Every tweezer has a sweet spot even when its closed entirely.
- This differs amongst different tweezers even if they are the same brand and exact same tweezer.
- To test for the sweet spot with your extensions, pick up some lashes and create some fans. Take note of where they work best

Correct Tweezer handling/positioning

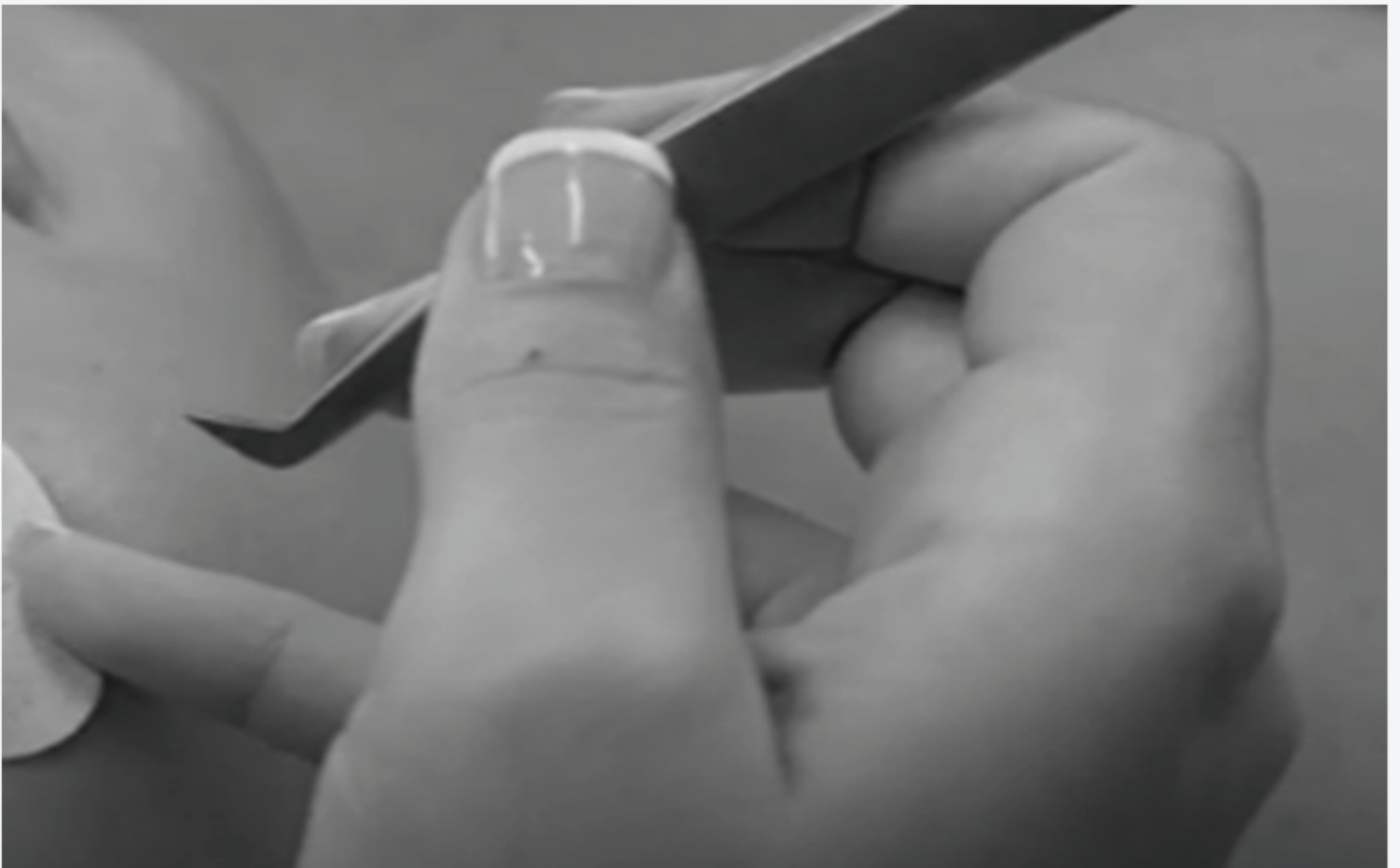
- Application tweezer should always be held with 3 or more fingers to ensure stability and the right amount of control.
- This is to ensure that your wrist/hands do not become fatigued and therefore affect your overall set
- To hold straight tweezers (used for isolating) you want to create a gun like gesture as displayed in the following image
- Rest the tweezers on the tips of the pointer and middle finger and your thumb should be placed in the middle (not too high, not too low)
- Rest your palm on the forehead for stability and your wrists will thank you later



- With the Applicator tweezer hold 2 fingers behind and your thumb in the middle towards the bottom of the tweezer to ensure maximum stability

- Use the palm of your hand or your pinkie finger on the client's face, nose, under eye etc to create stability and allows for easier application

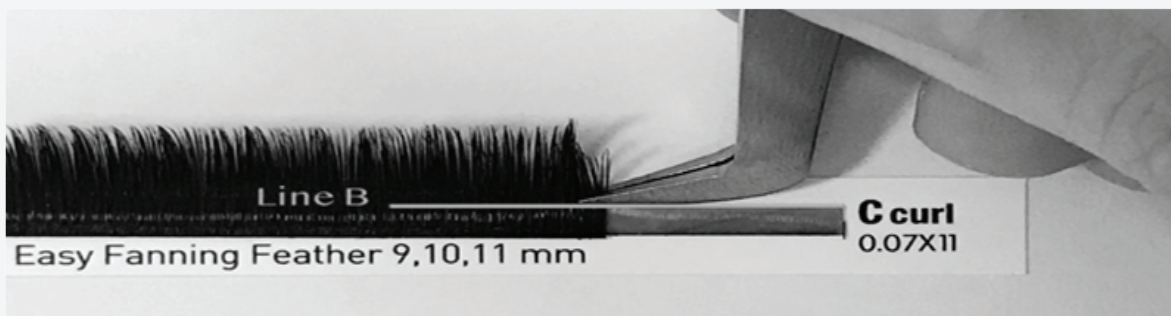
- Use the palm of your hand or your pinkie finger on the client's face, nose, under eye etc to create stability and allows for easier application



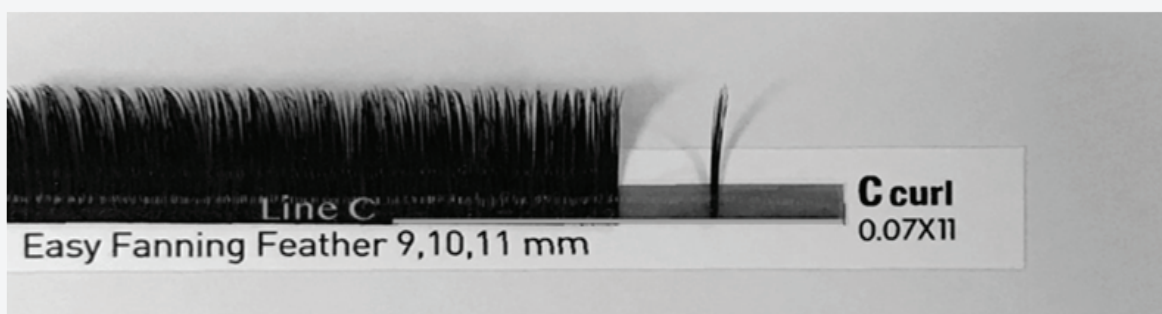
POSITIONING

Lonely Fan Method

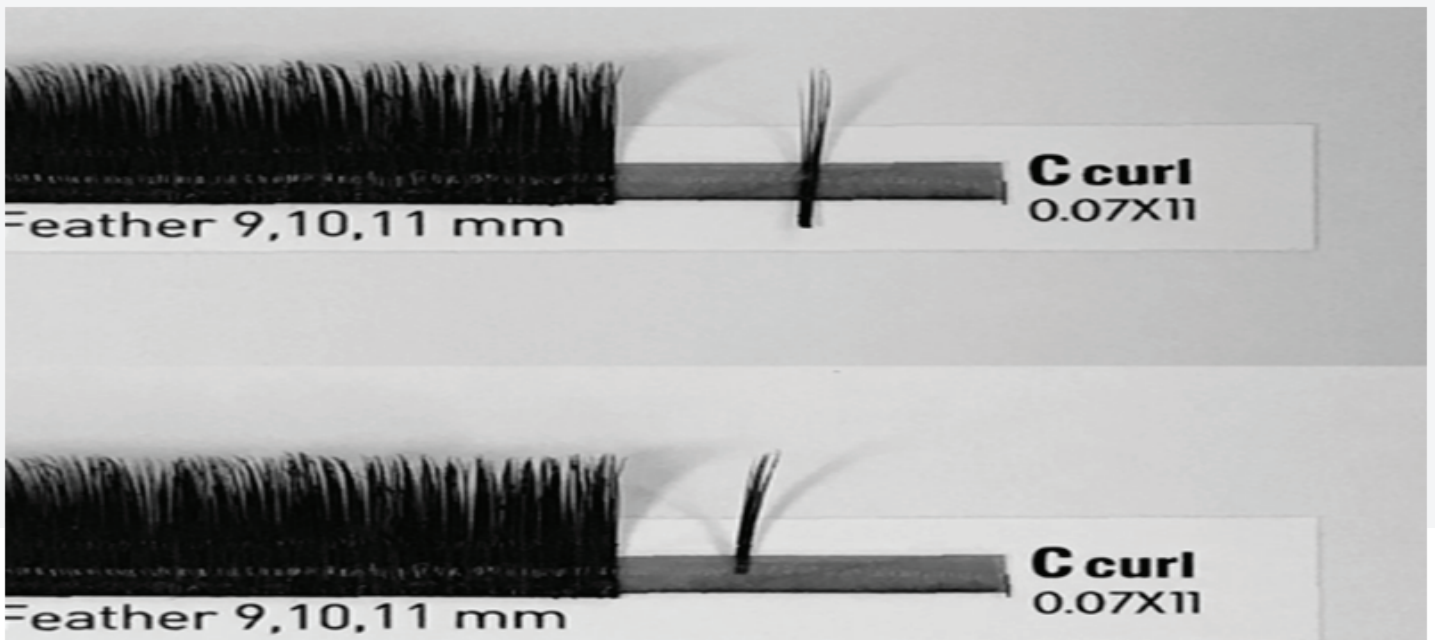
- This is easily done with a Boot tweezer.
- This technique allows you to create fans with flatter bases, ideal for attaching the Extension on top or on the bottom of the natural lash
- Firstly, you grip the lashes on top of the sticky strip (Line B).
- You are wanting to pull them towards you so they are entirely off the strip



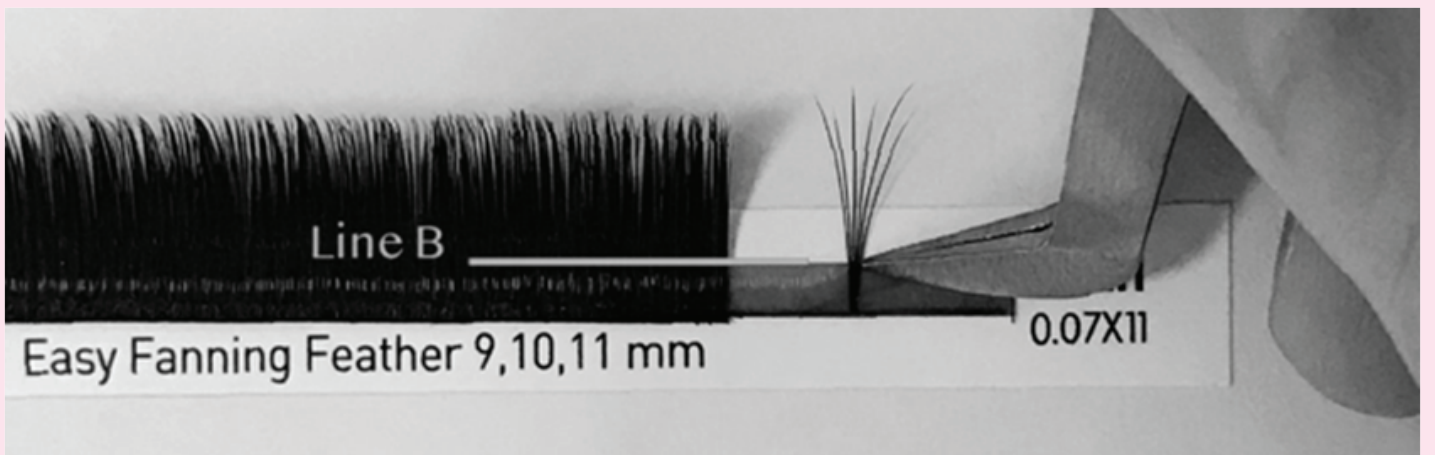
- Then you press them back onto the sticky pad making sure they are still all connected at the base
- When squeezed they should have a nice spring to them and not be too loose or too stiff as this will make it impossible to lash
- The base of the lash needs to meet the bottom of the sticky strip (indicated as line C)



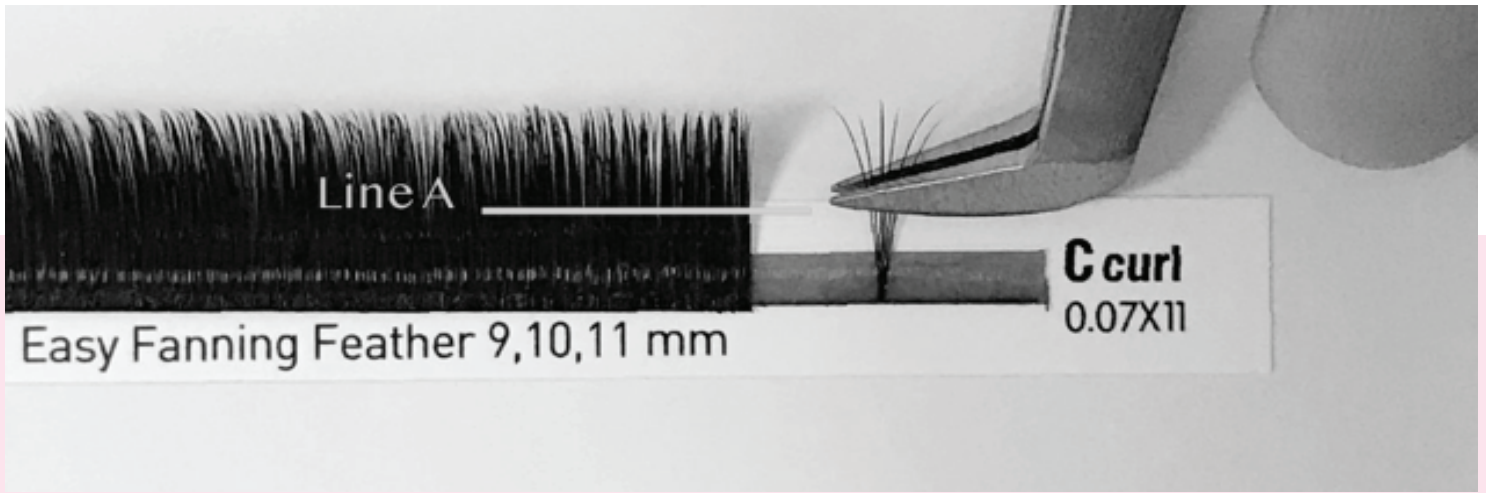
- The following image shows incorrect placement of the lashes once they have been picked up and re placed back onto the strip.
- Placing it too high or too low on the sticky strip makes it harder to fan and will cause your lash fans to point in all different directions and come apart



- Using the tip of the tweezer gently press at the top of line B and wiggle to open the fan as narrow/wide as desired
- Take your time here, there is no rush.
- Here we aim for the lash fans to be spread apart at equal distance (the importance of this will be explained further into this manual)

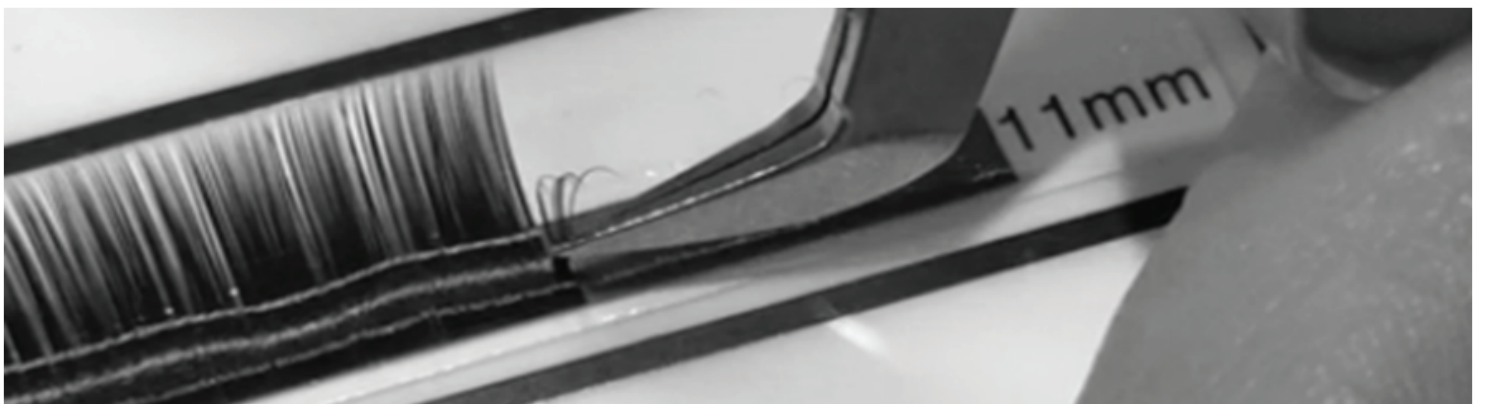


- Pick up the fan from line A (mid-section) in an upward direction and then at the very last second towards you.
- Picking it up from the mid-section ensures enough space for you to dip it into the adhesive
- This is also known as the sweet spot to pick up lashes it allows you to pick up the fan without losing its perfect fan shape
- If you were to pick up the fan below line A, will not give you enough space for you to dip the lashes into your adhesive and it will be hard to retain the fans shape. These then lead to poor retention

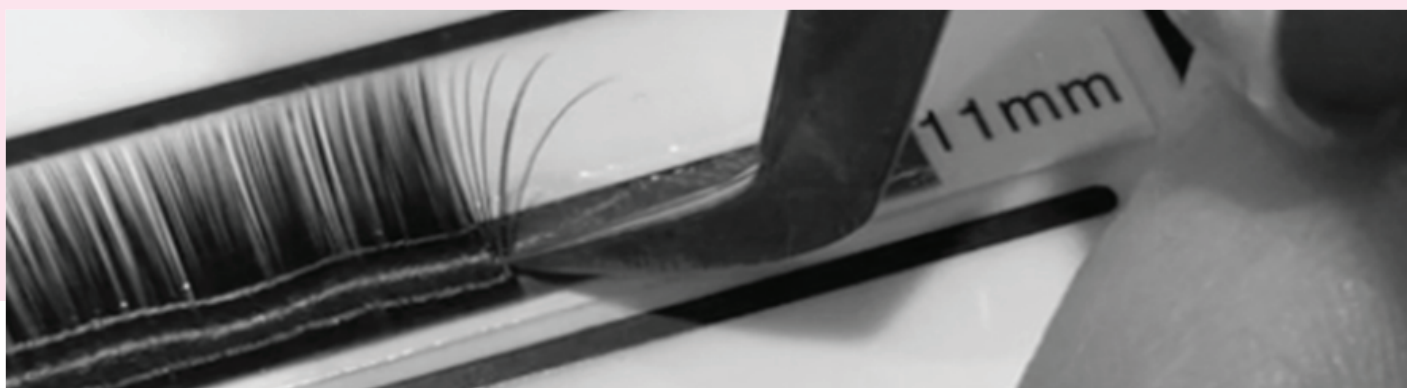


Rainbow Method

- Similar to the Lonely Fan Method, however instead of entirely pulling the Extensions off the strip, you're just taking your selected lashes away from their original group placing, roll the fans outwards creating a fan
- Firstly, grasp the number of extensions you are wanting to fan and pull them towards you without lifting them off the strip. Do not lift up here
- This method creates more of a stacked and squared base whereby attachment to the side of the natural lash is best.
- As you pull the extensions towards pull until you have reached half way down the strip that the lashes are placed on.



- Using the tip/point of your tweezers to press on the base of the lash until your lashes are evenly fanned out to how you would like them
- Pick up the fan just above line A using the sweet spot of the tweezers (middle of the foot)



Flower Shape Blooming Cup Method *(Tiffany's favourite and go to method of fanning)*

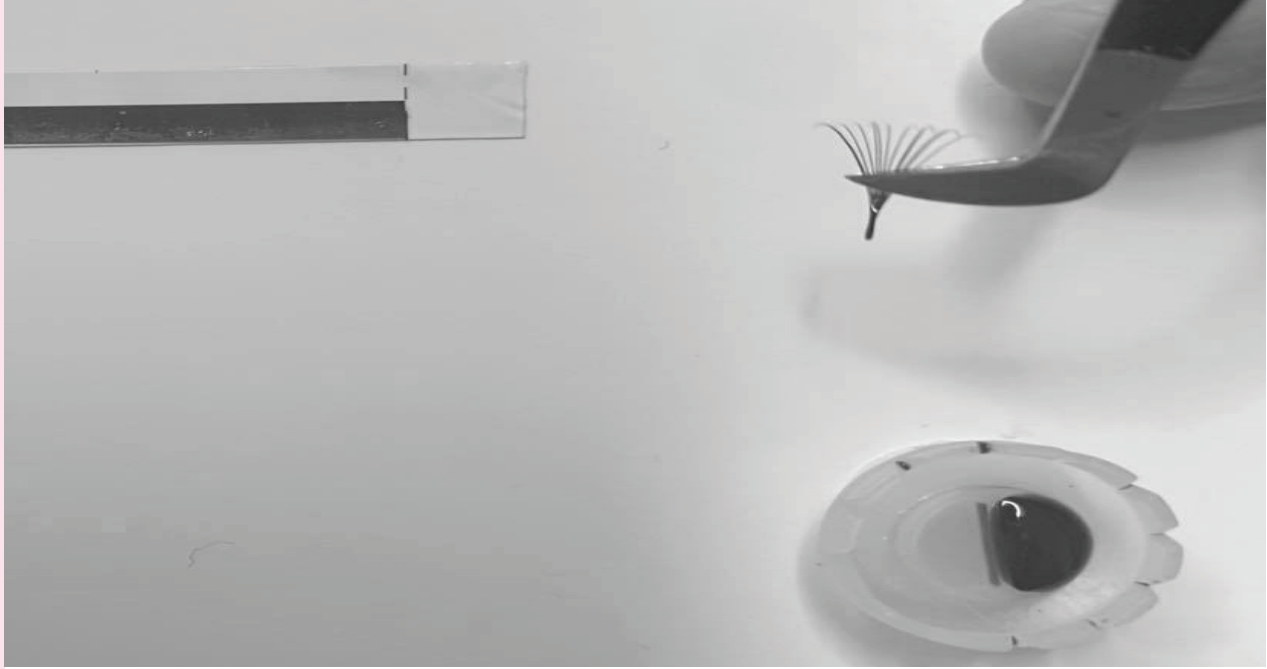


- Pull lashes towards you on the lash strip, pulling off the lashes entirely
- Ensure you are picking up the desired amount each time with the sweet spot of the tweezers
- Dip the base of the lashes into the rim of the glue drop, ensure you are not too heavy handed here, just the slightest bit of glue on the base is best
- Dipping the lashes too far in the adhesive droplet will make the actual fanning difficult and not fan properly

- Once you have dipped the lashes into the adhesive, place the base in one of the inserts and wiggle, wiggle, wiggle.
- Release tension of the tweezers ever so slightly whilst wiggling and the lashes will begin to fan out
- Run the base through the insert again and push down a little
- This will ensure you have that snatched, narrow base, allowing for perfect lash application as well as remove any excess and unnecessary glue



VIOLA, A PERFECT FAN WITH A NARROW BASE



Tip:

When first starting to Lash it is important to keep calm. It can be frustrating in the beginning when it comes to creating volume fans and this is why a lot of people give up in the early days and not pull through.

Trust me, I've been there. I've even cried to myself and told myself that I didn't want to do this anymore and now here I am.

Hard work and persistence with anything and you will be surprised how far you go. Everyone has the capability of doing crazy things that feel so unachievable in the present time.

Try out all fanning methods out and choose one particular technique that you like best and works better for you and perfect it! xx

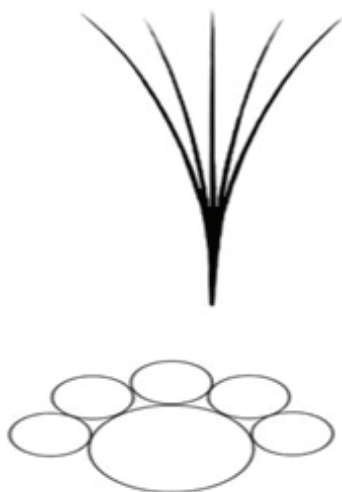
THE BASE

(THIN VS FLAT) AKA

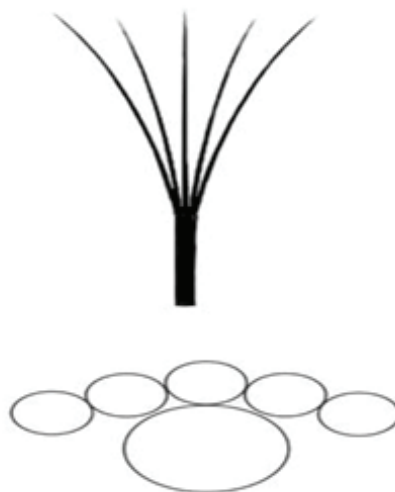
The Leg of the Fan

- Thin bases ensure that the extension is wrapped completely around the natural lash. This means better retention for your client
- Thin bases are versatile in a sense they can be attached to the natural lash underneath, on top and on the sides.
- Thin bases allow for a tidier and more precise look
- Flat bases are safe to be applied on the natural lash, however as depicted below the Lash Extension is unable to fully wrap around the natural lash which can possibly lead to premature lash shedding and overall poor retention
- Flat bases should NOT be applied to the sides of the natural lash (only underneath or on top)
- Flat bases can create a darker impression on the lash line, allowing you to properly fill in clients who have gappy/sparse natural lashes
- TIP: you may find that when trying to achieve thin base lashes but they always turn out to have flat bases it may be that your glue is drying too quick before you start wrapping the fan. Perhaps try a glue that gives you an extra 1-2 seconds to complete your ideal look
- TIP: The leg of the fan ideally should be no longer than $\frac{1}{4}$ of the entire lash length. This means if a fan is 12mm, the leg of it should be about 3mm. With a fan that has too long of a base/leg you can accidentally scoop too much adhesive, making your fans look more closed together and less fluffy. On the other hand, if the base/leg is too small then this will create a fan that is too wide creating difficulty and disfiguration when attempting to apply it on the natural lash. You only need to dip 1/2mm of Lash adhesive for it to be enough.

Thin Base Fan



Flat Base Fan



Opening

- Fans can be wide or narrow
- The opening of your fan will depend on the overall look you are wanting to achieve for your client
- Wide fans allow for a fluffier and lighter look and is preferred by many lash technicians.
- With wide fans, ensure that the base is not too short as this can negatively affect the retention

The width of the fan, ideally should not be wider than 6mm.

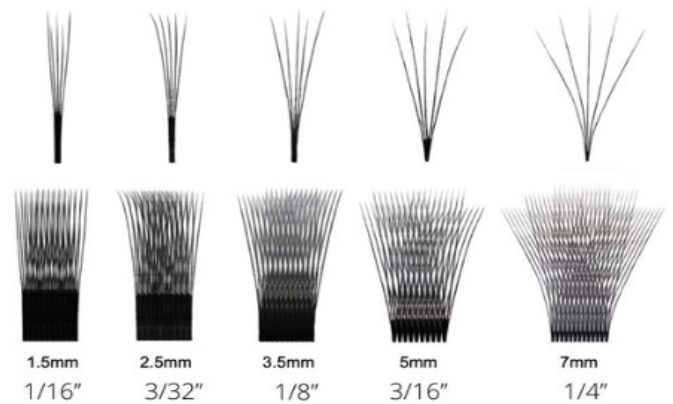
The wider the fan is, the messier and trickier the application will become

Reasons for fans being too wide:

- Thinking that the idea of having a wider fan ultimately equals the more volume. This is not the case.
- Thinking too hard about not achieving a fan that is too narrow
- More narrow fans create a denser, darker look that is also more uniformed.
- More narrow fans, particularly those that are 1-2mm in width create the impression of thin eyelashes and as though there is not enough volume.
- Narrow fans will make a set appear gappy.

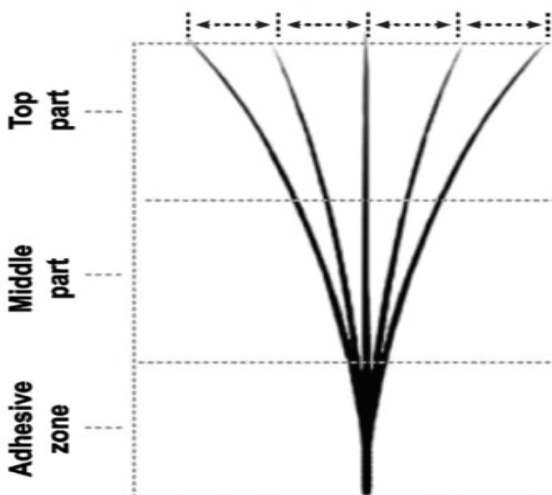
Reasons for fans being too narrow:

- When there are mistakes made when spreading lashes on the strip to create a fan
- working with the lash adhesive incorrectly
- Personally, I aim to achieve fans that are approximately 4-5mm wide. This I find is the sweet spot in between a super wide/super narrow fan.



< Narrow: **uniformed, denser**

Fluffy :Wide>

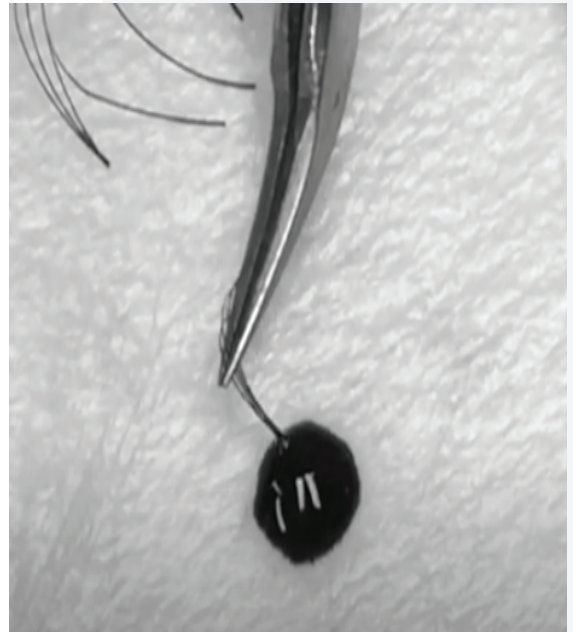


Symmetry

- The perfect fan should have a thin base and are spread apart at equal distance
- Creating a fan with the lashes being equal distance apart will not only ensure a clean and overall neat set but also allows for the perfect weight distribution

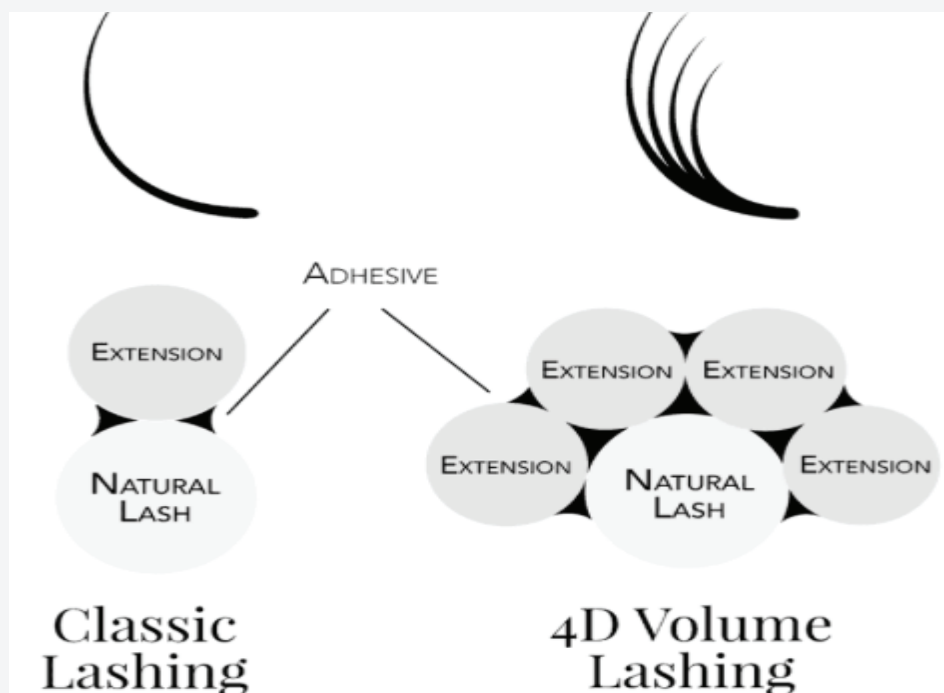
TROUBLESHOOTING SPLIT FANS

- Split fans are fans that have come apart and have crisscrossed at the base and are no longer joined at the bottom
- The crisscrossed base of the fan will make your work look dirty and will cause clumps. Crisscross fans occur when:
 - Pressing the tweezers too weakly
 - Making the fan overly wide
 - Using tweezers that do not squeeze together close enough (damaged tweezers from being dropped)
 - Picking up the fan in the wrong direction
- How to fix split fans:
 - To compose the fan and join the base together, dip the fan vertically into the glue without pressure. This will work if the glue dot is on a crystal/jade stone



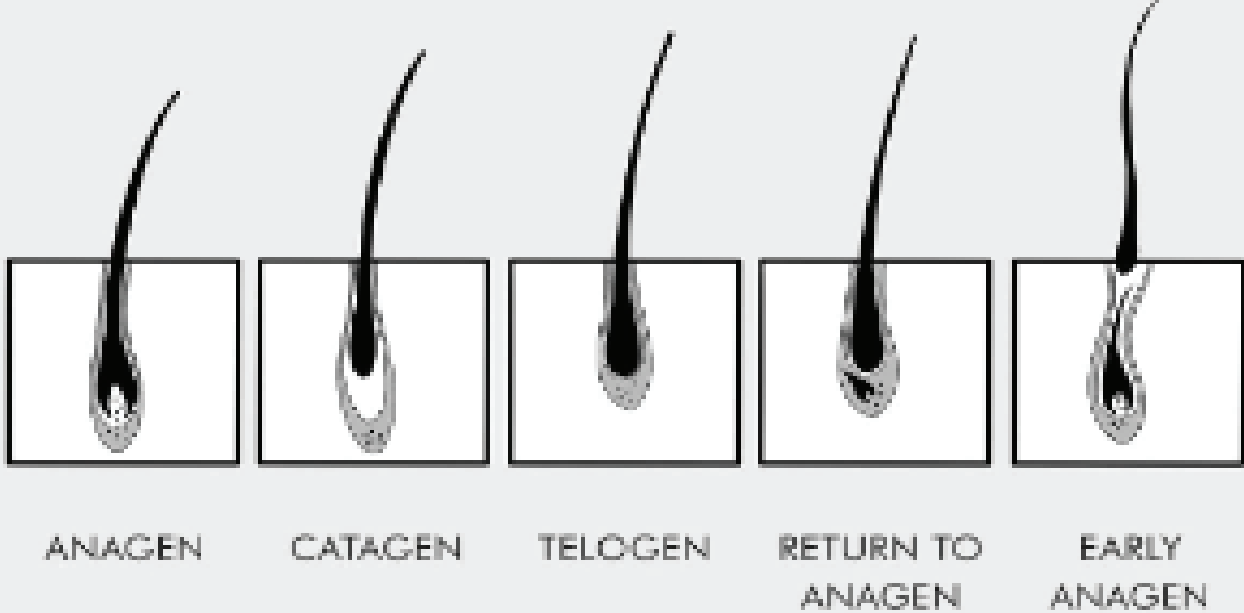
FAN ATTACHMENT

- Lash wrapping is a micro movement that allows for maximum retention as you are essentially wrapping the fan around the natural lash and hugging it
- Ensure you have isolated the lash you are going to apply the extension to and once you have built your fan, place it on the natural lash and wait until you know it somewhat has attached itself to the natural lash and has a proper hold of the natural lash.
- Then you are to push down on it towards the eye lid gently (1-2mm away from eyelid)
- This causes the base of the fan to wrap around the natural lash



PRO-MAKING LASH FANS

- When starting out your lashing journey, you are spending all your time perfecting fans, so why not store them away in small individual containers so that you can use them when lashing clients.
- If choosing to pro-make fans and store them until used, ensure that the fans are nice and thin. They should be super pointy as they will need to be dipped into glue twice and we do not like a thick chunky base.
- This is a smart way to not let perfect fans go to waste as well as minimises the time spent on a full set and/or infill application.
- These are called pro-made fans NOT pre-made.
- Pro-made lashes are essentially hand made in advance and have already used a technique called 'crystallisation' to store the fans for future use.
- Crystallising fans means once you have dipped the fan into the adhesive you must swipe off any excess glue so that the fans are not weighted down as well as form a thick blocky glue base.
- Tip- the smallest amount of adhesive will provide best results as you have to keep in mind that the fan will have to be re dipped into the adhesive, which already minimises the chances of the lash 'wrapping' around the natural lash once applied.



- It is recommended that clients get infills every 2-3 weeks due to everyone's susceptibility of a natural lash shed cycle. This is because the average person has 90-120 natural lashes per eye. When you take this into account, naturally 2-5 lashes shed per day.

- Lash infills are lash fans or individual lashes that fill in the lashes without an extension

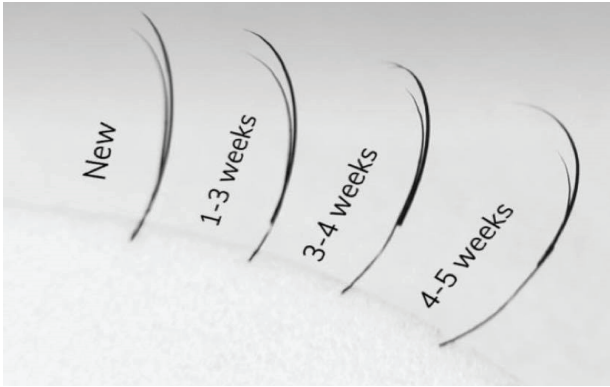
- In order to maintain a fresh, neat set of lash extensions for as long as possible - infills are a must because of the natural lash cycle itself.

- Above is a diagram that demonstrates how lashes mature and shed in a continuous cycle.

INFILLS

OUTGROWN LASHES AND REMOVAL

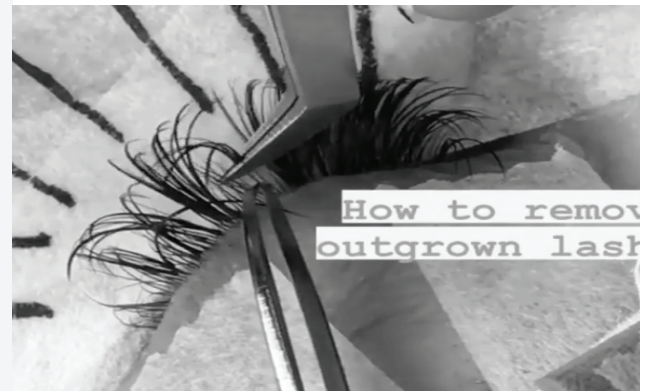
Identifying Outgrown Lashes



- Outgrown lashes need to be safely removed prior to completing a lash infill.
- Some client's natural lashes grow quicker than others, so this means you will have more outgrown lashes to remove prior to commencing the infill.
- Removing all outgrown lashes that are further than 1-2mm away from the lash line is important in maintaining the overall health of the natural lash as with outgrown lashes clients find that the extension can start to twist/ turn/lean and appear to long and as a result feel uncomfortable.
- Infills generally take anywhere between 1 hour-1 hour 30

- Using the isolation tweezer which is usually in your less dominant hand squeeze the tweezer so that you have a firm grip of the natural lash.
- Using the tip of the volume tweezer, push upwards on the base of the lash extension. This should allow it to pop off the natural lash without any damage, or pain.
- Another method of removing outgrown lashes is using the banana peel technique
- Using the isolation tweezer, pull back the extension towards you whilst with the volume tweezer, pull opposite direction (downwards) so that it can peel of the natural lash as well as any glue residue.

How to safely remove outgrown lashes



- You will find that most clients have multiple layers (between 2-6) layers of lashes. It is rare for them not to unless they are damaged and/or have been picked out
- The more layers, the more difficult it is to lash. Most commonly, you will find that your clients have 3 natural lash layers- a top, middle and bottom.
- Once you have prepped your clients lashes and have applied the undereye pads and secured the bottom lashes down with tape it is time to get your tape ready so that you can properly lash in layers
- Before starting, a reminder to ensure your hands are properly sanitised as you will be needing to place the tape on the back of your hand to minimise the stickiness of the tape.



With the tape that has been on the back of your hand with the stickiness removed- apply it underneath your client's natural lashes sticky side up and pull them back up towards the eyelid



Once all of the lashes are taped out of the way, you can grab a pair of your straight tweezers and begin pulling out the bottom layer of lashes from under the tape.



Apply the lash extensions to the isolated layer. Once complete, tape the lashes down to the gel pad.

Dark blacked out set

When it comes to styling the lash set and wanting to achieve a dense and dark full set, using the same lengths for all layers will allow for this

Perfectly symmetrical / neat set

Applying longer lash extensions on the bottom layer then moving towards shorter lengths as you go from the middle to the top layer will allow for the appearance of a darker lash line and the overall set will appear to be all the same length when looking front on

Wispy / textured set (FAN)

With the mixture of different lengths and curls throughout all layers of the eyelashes, the creation of a fluffy, yet textured set can be achieved. Using stronger curls such as a D or DD curl on the bottom layer of lashes ensure that none hang too low and it lifts client's lashes, particularly if they have downward pointing natural lashes

LASH LAYERING

HYBRID LASH SETS

What is a Hybrid Set?

Hybrid lash sets essentially involve a mixture of classic 1:1 eyelashes as well as volume fans (usually 2-4D).

They are also referred to as the mixed set- the perfect in between for a versatile result.

There is no right or wrong here. Generally, a Hybrid Set can be a 50:50 mixture of handmade volume fans and classic 1:1 individual lashes or 60:40 or even 70:30.



What is a Hybrid Set?

- Hybrid lashes are the perfect in between for a client who is perhaps new to the whole lash extension scene or a client who is used to getting a classic set but is hesitant to try a full volume set.

- Hybrid sets make it easier to achieve texture and wispieness

- Allows for the overall set to be a little fuller, dense and textured than your average classic set but is not over the top and as full and uniformed as a Russian Volume Set.

- Suitable to those with lash issues- (super thick, thin, sparse and weak lashes)

- Hybrid sets are perfect for clients who want the best of both worlds; a little fuller than a classic but not quite a volume set.

- Perfect for clients whose natural lash line is quite sparse and gappy. This is because in the gaps you are able to place volume fans to make the lash line appear fuller

How to map a Hybrid Set?

- To complete a Hybrid Set, the Classic lashes used are generally 0.10mm or 0.15mm in diameter.
- You can be quite experimentative here and even use 2x 0.07mm lashes unfanned to compensate for the classic lashes
- In terms of the volume side of things, 0.05mm or 0.07mm diameter lashes are used to create fans that are generally 2-4D.
- Ideally you wouldn't want to go above 5D fans because your client may as well opt for a light volume set instead

1:1
CLASSIC
LASH
TRAINING
MANUAL

FOR BEGINNERS

By Tiffany Akscnoff

Copyright 2023 by Lashes by Tiffany

1:1 CLASSIC LASH TRAINING MANUAL FOR BEGINNERS BY TIFFANYA AKSENOFF

All Rights Reserved. The information present in this training manual has been prepared based on industry experience and previous learning. No part of this book is to be reproduced or transmitted in any form or by any means, electronic or mechanical, including photocopying, recording, or by any information storage and retrieval system, without the written permission of Lashes by Tiffany, except when permitted by law.

While Lashes by Tiffany does its best to adequately train her clients with this extensive training manual, reliance on any of this information is taken at your own risk.

The information presented herein represents the views of the author as of the date of publication. This book is presented for informational purposes only. Due to the rate at which conditions change, Lashes by Tiffany reserves the right to alter and update opinions and information at any given time. While every attempt has been made to verify the information in this book, the author does not assume any responsibility for errors, inaccuracies, or omissions. Lashes by Tiffany does not accept any responsibility for the misrepresentation of the information contained within this training guide.

A breach of copyright is recognised as a criminal offence and any form of breach will result in prosecution with heavy compensation claims.

COPYRIGHT

TABLE OF *Contents*

Introduction	6
What is included in your Lash Kit?	7
Hygiene & Safety	10
History of Lash Extensions	13
Growth Cycle of natural lashes and Isolation	14
Isolation	17
Body Positioning	21
Different Eye Shapes and Styles	20
Curls, Thicknesses and Lengths	27
Lash Mapping	30
Lash Direction and Framing	34
Lash Adhesive	36
Navigating potential Lash application contraindications	39
Client Consultation	41
Before Application	45
Fullset and Infill Removal Process	53
Setting up your business	32

INTRODUCTION

This training is dedicated to those who are wanting to better themselves to achieve the unachievable and to stand out from the crowd. My hope is for this training manual to be the foundation for which you build that career that was once a dream and an idea.

- *Tiffanya*

Lashes by Tiffanya would like to Thank You for joining our Classic Lash Training Course and trusting us to teach you absolutely anything and everything needed to start your career within the Lash Industry

Perfecting your art takes time, dedication and passion. You will need to demonstrate constant practice in order to develop your skill. This manual is a great tool to refer back to at any point in your education.

WHAT IS INCLUDED IN YOUR LASH KIT

IN YOUR LASH KITS

- Lash Training Manual
- 2x Mixed 0.15 D Curl Classic Trays
- 1x Mixed 0.15 C Curl Classic Tray
- 1x Mixed 0.10 D Curl Classic Tray
- 2x Mixed 0.07 D Curl Volume Tray
- 1x Mixed 0.07 C Curl Volume Tray
- 1x Mixed 0.05 CC Curl Volume Tray
- 1x Lash Tile
- 1x Isolating Tweezer
- 1x Classic Lash Application Tweezer
- 1x Volume Fanning Tweezer
- 1x Alcohol Wipes (50 pcs)
- 1x Lash Glue Remover
- 1x Mannequin Head
- 1x Pack of Training Eyelash Strips

- 1x Flower Glue Cups (15pcs)
- 1x Gel Under Eye Pads (25 pcs)
- 2x Lash Tape
- 1x Adhesive
- 2x Practice Sponge
- 1x Micro swab Applicators (20 pcs)
- 1x Disposable Mascara Wand (50 pcs)
- 1x USB Rechargeable Fan
- 5x Glue Holder Trays
- 1x Lash Cleanser Bottle
- 1x Saline Squeeze Wash Bottle
- 1x Lash Mirror
- 1x Fine Tip Pen
- 5x Clear Pot Containers

Everything you need to be able to complete a Classic Lash Set on around 15-20 Clients

OTHER GENERAL SUPPLIES/EQUIPMENT YOU NEED

- Cleansing Wipes for Glue
- Sanitiser
- Disposable Face Mask
- Disposable Bed Sheet Roll
- Lash pillow
- Trolley
- Digital Clock Temperature and Hygrometer
- Hospital Grade Disinfectant
- Saline Water
- Distilled Water
- Beauty Bed
- Ring Light
- Salon Stool
- Steriliser
- Lash Nanomister
- Selfie Mirror
- Business Cards

WHAT YOU GET ON THE TRAINING DAY?

- Your own Lash Kit valued at \$400+
- Extensive Lash Training Manual
- Worksheets
- Theory & Practical Education
- Live Model Practice (Closely Supervised)
- Certificate upon completion
- Lash Activity Book
- Hospital Grade Disinfectant

HYGIENE & SAFETY

The Health and Safety of our Clients is of utmost concern.

Remember, you are working around the eye area which is a delicate and sensitive area. You must be alert and careful throughout the whole process.

SANITISATION

- Ensure Hands are clean at all times. Thoroughly Wash and Dry before completing any Lash set/preparation

REUSABLE TOOLS

- All reusable tools and equipment should be washed, rinsed, disinfected, rinsed, dried
- Remove all traces of adhesive with an alcohol wipe/ tweezer cleaner
- Wash tweezers and scrub in warm soapy water, rinse and place in Hospital Grade Disinfectant or 10 minutes.
- Rinse and dry
- Once dry, store tweezers in an airtight container

DISPOSABLE TOOLS

- Disposable micro swabs, gel pads and tape should be discarded
- Disposable Lash Wand can be given to client as part of everyday aftercare routine

CLIENT SAFETY

- Ensure Clients eyes are kept closed at all times during the application. You need to be able to see the base/ root of the lash clearly. There are magnifying glasses if need be.

- If glue touches the client's skin at any point in time immediately dip a cotton tip in the Lash Glue Remover and rub gently on that area. Then use lash cleanser and a clean cotton tip to wipe the area, followed by a dry cotton tip/tissue to pat dry the area.
- Always be alert, ensure that there are no distractions around e.g., phones, pets, children

PATCH TEST

- If you have a client new to Lash Extensions and they are worried about them reacting to the glue or have had a reaction in the past to something around the eye area a patch test would be recommended.
- Or simply if the client has particular allergies and you feel you need to do a patch test beforehand, do so.
- A patch test is done by placing short classic lashes (2-5 on each eye) that way it will not be visible to others.
- Clients would book in for an appointment the following day if they did not have a reaction.

ALLERGIC REACTIONS

- An allergic reaction can occur randomly, at any point in time even if the client has been getting their lashes done for years on end.
- Allergic reaction can be seen as swelling, eczema/dermatitis on the eye lid.
- This needs to be explained clearly to clients as a lot of people do not understand that this can happen.
- Advise client that you are not a Medical Practitioner and cannot diagnose/treat. You can advise them to put a cool compress on their eye and seek medical expertise as soon as possible.
- Removals are not recommended when swelling is apparent as it will cause further irritation. You should wait until the swelling has subsided.
- If a client comes back for an infill and you notice dry skin on the eyelid/redness it is more than likely they have reacted to the glue. Advise them that it is safest to not continue and that any further action is taken with them knowing the risks involved.

CONTRAINDICATIONS

- Contraindications are conditions that make the Lash Extension application potentially inadvisable.
- They range from temporary to permanent that inhibit a client from getting Lash extensions in general or they perhaps see a need for the Lash Technician to work around the issue cautiously.

These include:

- Client having some sort of reaction to the patch test
- Skin conditions around the eye area such as dermatitis, psoriasis & eczema
- Eye conditions such as Dry eyes, Blepharitis, the use of contact lenses
- Medical conditions such as Alopecia and Hayfever

HISTORY OF LASH EXTENSIONS

Eyelash extensions have been around since the Early 20th Century.

21st Century and they still be here though.

From Kim K, to your Mum exploring Lash Extensions, they have well and truly permeated the mainstream.

WHAT ARE LASH EXTENSIONS?

- Lash Extensions are semi-permanent fibres that are individually glued onto your natural eyelash. They are designed to add length, curl and volume to your natural lashes semi-permanently

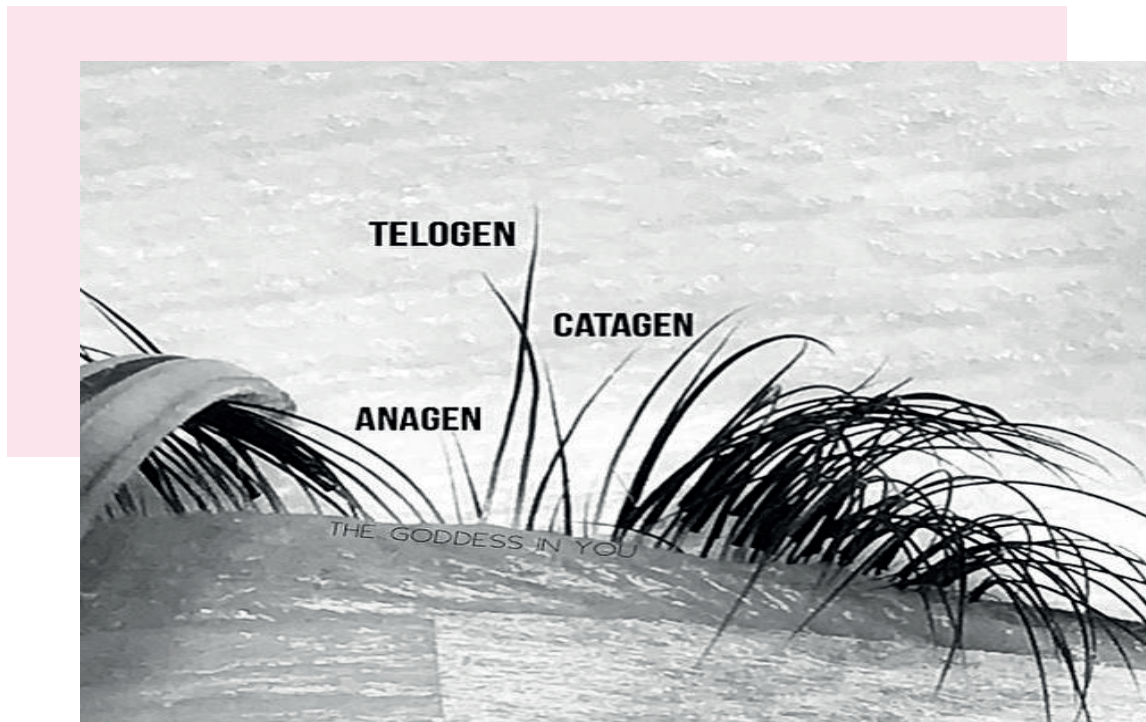
GROWTH CYCLE OF NATURAL LASHES AND ISOLATION

- Just like the hair on your head, each individual eyelash is set to grow to a certain length and fall out, only to grow again.
- Most of us have 90 – 160 lashes on the upper lash line, distributed among 3-5 layers of lashes.
- On average, the whole lash cycle is roughly 60 days. This means as one falls out another lash is ready to take its place. Depending on your lash growth cycle, losing you generally lose between 1 and 5 lashes a day. This can vary according to someone metabolism, medication they are taking, medical conditions, oily skin etc

THE THREE LASH PHASES

- Eyelashes go through three distinct phases in their growth cycle: Anagen (active growth), Catagen (transition), and Telogen (resting). The complete cycle can take anywhere from four to eleven months to complete.
- **The Anagen Phase (80-95%)**, also known as the Active Growth Phase
- This phase generally lasts 4-10 weeks until fully grown
- It is important to take note that roughly 30-40% of lashes may be in this phase at once
- You can add a Lash extension, however due to the natural lash actively growing in this phase, they tend to grow out quicker and thus shed and grow out in a funny direction.
- **The Catagen Phase (1-5%)** also known as the transition phase

- It is the second phase where the hair follicle begins to shrink, detaches from the blood supply and stops growing.
- This is the optimum phase for attaching lash extensions
- **The Telogen Phase (10%)** also known as the resting/shedding phase. Lashes sit dormant and rest whilst new baby hairs begin to grow inside the follicle causing the old lash to shed naturally
- This is the optimum phase for attaching lash extensions



ALARMING LASH SHEDDING SYMPTOMS

*"All of my Lashes fell out overnight
My Lashes are falling out more than normal"*

- Spring is the first round of seasonal hair loss in the year
- When Lashes fall out attached to the natural lash, this is due to the body preparing for the upcoming warmer and less humid months
- During this time your body increases its oil production to keep the hair and skin hydrated
- There isn't a much you can do other than wait it out, and have your clients schedule more frequent infills. Once the shedding cycle is done, clients generally have better retention as the lashes are new and strong.
- When lashes fall out without the natural lash, then this occurrence is generally from the wrong use of lash adhesive or incorrect aftercare from the client. It could also be due to your room's humidity, temperature,
- When this happens- it is important to not blame the client but to ask the following questions:
 - Is the drying speed of your Lash Adhesive too fast for you?
 - Did you shake the glue and change your adhesive every 30 minutes?
 - Did your client take a hot shower, sweat profusely, used the swimming pool/sauna within 48 hours after the application?
 - Did your client use any oil-based products like makeup remover, cleanser, moisturiser?
 - Did you clean the lashes properly and rinse with saline before application?

ISOLATION

- Isolation allows for the natural shedding process to occur
- Using the right gel pads (ones that sit flat) as well as the right tape ensures that your tweezers do not get stuck onto the pad
- Each and every natural lash goes through their own cycle, therefore it is important to ensure no lashes are stuck together.
- It is important to isolate because lashes that get stuck together (Stickies) can cause the natural hair follicle to fall out prematurely as could be just sprouting whilst another is about to fall out to let another one come through

- This can be painful and irritating for Clients
- In the beginning, you can use both tweezers to help isolate until you feel comfortable using one hand



DIFFERENT ISOLATION *Techniques*

DOUBLE HANDED ISOLATION TECHNIQUE USING BOTH TWEEZERS

- It is most effective to isolate a natural lash properly by using both tweezers at one given time.
- Pointing the isolator tweezer downwards towards the natural lashes and then holding it apart with the volume tweezer allows you to create a clear field of vision and separation of the natural lashes making isolating that much easier
- Every lash artists hands are different, therefore you want to play around with what feels most comfortable



RING FINGER TECHNIQUE

Firstly, ensure your hands are extra clean as safety and hygiene is one of your main priorities (to avoid infections or cross contamination)

Using your ring finger or whichever finger you feel comfortable with using allow, manoeuvre through the lashes making isolation that much easier

This technique best works for clients who already have extensions attached as your fingers can be too bulky when it comes to the separation of natural lashes

TAPE UP TECHNIQUE



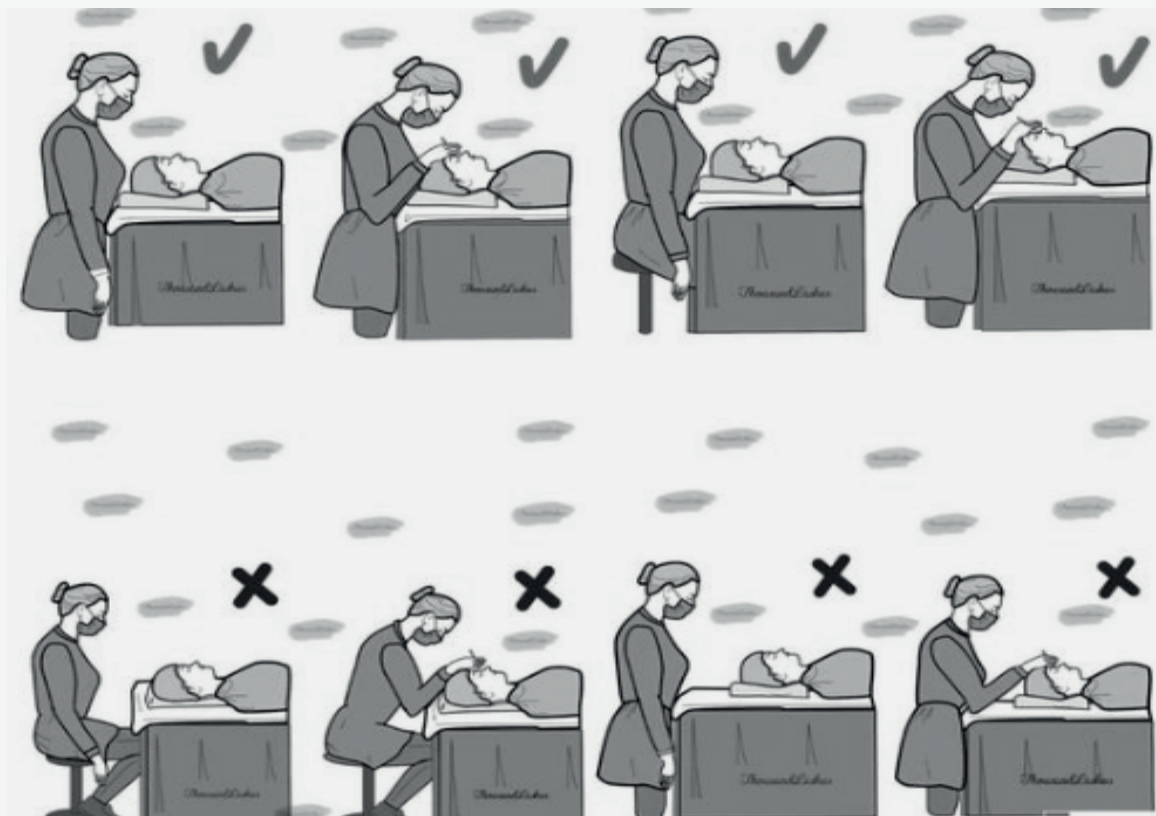
This technique is useful when you find your client has a super dense lash line (a lot of natural lashes)

- You may find the tape you are using to be super sticky. To avoid unnecessary pain to your clients, minimise the stickiness by using the back of your hand
- This method allows you to work in layers (more in depth in the layering module), meaning no more stickies



BODY POSITIONING

- Taking into consideration the way you are positioned is paramount, particularly for the longevity of your back, shoulders and neck
- Make sure that your back is straight at all times (avoid slouching or leaning over your client)
- Ensure that you are sitting as close as possible to your beauty bed and clients head to ensure that you are able to keep a neutral spine
- The bed and your adjustable stool should be at a height that allows you to sit straight up with both feet flat on the floor and on either side of the bed.
- The positioning of your tweezers and client's lashes should ideally be at your breast level
- You can rest your elbows on the beauty bed for stability and to avoid any unneeded body aches and pain
- Avoid the tucking of your chin downwards as this will create unwanted strain and tension on your neck and by the end of the day you will definitely feel it
- Your wrists should almost always be touching your client's forehead positioned comfortably (not flexed or down) not only for stability but to avoid medical complications down the track



DIFFERENT EYE SHAPES AND STYLES



WIDE SET EYES



CLOSE SET EYES



HOODED EYES



ALMOND EYES



DOWN TURNED EYES



ROUND EYES



MONOLID EYES

- Eyes are completely unique in terms of shape, colour, size etc.
- It is not easy trying to figure out the right Style of Lashes for your client's eye shape.
- However, being familiar with the different eye shapes and Lash Styles you will be able to work out what would be the best Style to flaunt the shape of your clients' eyes.
- It is important to explain to clients that how the lashes look on others will not always look the same on them. For example, your client might say "I love the cat eye lashes on my bestie; I'm wanting exact same"
- The truth is that you might know for a fact A Cat Eye Set will not suit your client because their eyes perhaps are small.
- You are the professional here so advise them your opinion, more often than not they will listen to what you recommend is best

WIDE SET EYES

DO's

- Using shorter lengths towards the end/outer corner as this will visually make eyes appear closer
- Following the natural lash pattern, placing longer lashes in the middle to open the eye more will create the illusion of the eyes appearing more opened as opposed to being so far apart

DON'Ts

- Placing longer lashes towards the end will only accentuate the eyes more outward, elongating the eye and making them appear even further apart

CLOSE SET EYES

DO's

- Your main goal here is accentuating the eyes outwards towards the sides of the face
- Using longer lashes towards the end corners of the eyes like a Cat Eye will effectively achieve this
- Use shorter lengths in the inner corners and do not make it too heavy

DON'Ts

- Do not put too much emphasis on the inner corner it will only create the appearance of the eyes looking even closer
- Do not put longer lashes in the middle of the eye to open it as this will only make the eyes deeper like

HOODED EYES

Dos

- Flatter lashes like a C or L Curl will extend past the hood before curling
- Flatter curls allow for the Lash extension to sit flush against the natural lash and provide a stronger bond between the natural lash and the extension

Don'ts

- Do not use shorter lashes as they will not cover the excess skin fold (hood)
- A strong curl like a D curl too much that the tips will be digging into the hood

ALMOND EYES

Dos

- As these eyes are known as the most common and versatile eyes, it really comes down to the overall look a client would like to achieve
- An almond shape client gives you the chance to flex your best work as anything will look amazing
- Using a Strong Curl like a D or L curl in the outermost quarter of the lash line will give an additional lift, which let's face it, who wouldn't want a free Eye lift?

Don'ts

- There really isn't any what not to dos, however decreasing the lengths of the last few lashes at the outer corner will just ensure that the lashes don't start to look droopy

DOWN TURNED EYES

DOs

- Follow the natural shape of the lashes or even adding longer lashes in the middle of the lash line to open the eyes as naturally with Down Turned Eyes the outer corners sit lower than the inner corners
- Strong Curls like D or L will help lift the eye especially on the outer edges paired with a Softer C Curl used throughout the middle section of the lash line

DON'Ts

- Do not make the lashes too full on the outer edges as this will just cause the eyes to look even droopier
- Cat Eye does not look flattering on this eye shape (TRUST ME ON THIS ONE).

ROUND EYES

DOs

- Longer Lashes towards the outer corner mimicking a Cat Eye allows for the elongation of the eye and makes it look longer, smaller and more almond like

DON'Ts

- Perhaps use a flatter curl such as a C Curl as opposed to a D curl.
- Using a Strong Curl will make them look as though they are surprised & emphasise the overall roundness of the eye.
- Do not use Longer lashes in the middle of the eye as it will cause the same reasons above.

MONOLID EYES

DO's

- C and D Curls can both be used to open up the eye as these types of eyes have no crease line.
- This Eye Shape is commonly amongst Asian clients, but can occur not only with Asians.
- Longer Lashes at the beginning to mid-section of the lash line will open up the eye and balance out the clients' eyes
- 9mm,10mm,11mm,10mm,9mm,8mm

DO NOT's

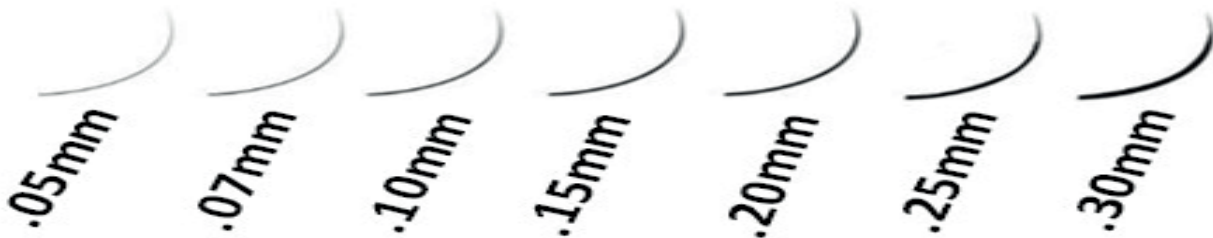
- Personally, I do not use longer lashes in the outer corner with this particular eye shape, however I have had many Asian clients who love this look.
- It doesn't necessarily look bad and some opinions would say this style suits this particular eye shape. It is personal preference of the client at the end of the day with an honest input from the professional a.k.a YOU

CURLS, THICKNESSES AND LENGTHS

EYELASH EXTENSION CURLS



THICKNESSES



LENGTHS



CURLS

C Curls

- **The most natural Curl as it is not too flat and not too much of a curl**
- The closest curl to most people's natural curl
- Perfect for a softer, natural set
- C curls can be blended with D curls to create a textured look
- Creates an open eye effect without appearing too drastic

D Curls

- **A more dramatic, visible and from far, obvious curl with the most lift**
- My go to lash curl
- I use these on majority of my clients as it gives the most desirable look requested by clients
- A dramatic, but not over the top curl that allows for drama

L Curls

- **Built with a dramatic, harsh upward curl mimicking a right angle**
- Ideal for clients with hooded eyes
- Ideal for clients with Down Turned Eyes, wanting that lifted look
- Ideal to use at the outer ends of the eye for that foxy, Eye Lift look. Creates a stronger bond between the extension and the natural lash as it is able to sit flat on the natural lash

THICKNESSES

- You may come across clients with very thin, sparse and brittle natural lashes as well as clients with long, thick and strong lashes.
- The thickness of the individual lash also known as the diameter solely depends on client's natural lashes.
- It is your job to assess your clients' natural lashes and determine what thickness is suitable for them
- For thin, natural lashes it is recommended to use Lash Extensions with a diameter of 0.10mm
- For healthy natural lashes they generally can take the weight of 0.15mm safely
- Clients with full, thick and strong natural lashes can take the weight of 0.20mm Lash Extensions

•The weight of each Lash Extension

0.20mm- .00030g

0.15mm- .00015g

0.12mm- .00012g

0.10mm- .00010g

0.07mm- .00007g

0.05mm- .00003g

0.03mm- .00002g

LENGTHS

- Being able to determine the length of the Lash Extensions you are going to use is essential
- Generally, you can go about 20% (2-3mm) longer than the client's natural lash.
- Using Lash Extensions that are too long will cause poor retention and lash health damage
- The Lengths of the inner corners should always be kept short



- Lash Mapping is a technique used by Lash Technicians to keep both eyes completely neat and even
- Mapping is a systematic approach that you achieve the right density, dimension and overall symmetry on each eye
- This requires you to number the lengths of the Eyelash extensions that are going to be used on the Eye Pad with a Pen once discussing the suitable Style of lashes with your client
- Mapping allows you to recall the lengths and whereabouts a particular lash length will be placed to achieve the desired look.

LASH MAP STYLES

- It is often that clients come to you with an idea in their head or a reference photo of a particular set they would like. However, you need to assess a few different aspects to determine whether or not what they have asked for will suit them
- Allow your client to sit/stand still for a minute while you assess the following:
 - **Eye shape:** Are the eyes round, almond or Monolid? Hooded or protruding? Symmetrical? Small or big eyes?
 - **Eye angle:** Straight? Upturned or downturned?
 - **Eye spacing:** Close-set or wide-set eyes
 - **Natural Lash Length:** Your client may want super full/long natural lashes, but you have to inform them that depending on the strength of their natural lashes, they may be unable to support the extension as they are too delicate

3 GENERAL RULES OF LASH MAPPING

- 1. Choose your Maximum Length (3mm Rule of thumb)**
- 2. Vary your lengths across the eye (5 Lengths minimum)**
- 3. Keep the inner corner short (Never exceed 10mm)**

CHOOSING YOUR MAXIMUM LENGTH

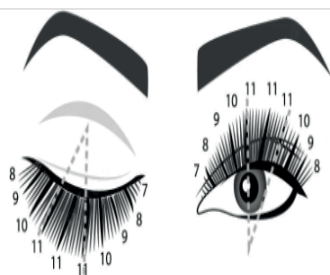
- When it comes to determining the lengths to be used for your set it is important to keep in mind that you cannot exceed your clients natural lash length by no more than 3mm.
- Keep in mind lashes may be long, but appear to be brittle, fine and delicate. This means that in this instance lashing the same length as the natural lash will mean the natural lash will be able to hold onto the extension better without causing stress and/or damage
- The no more than 3mm Rule of Thumb is important to take into consideration so that the natural lash can safely hold the extension without causing any damage.
- For example- Natural lash is 10mm. $10\text{mm} + 3\text{mm} = 13\text{mm}$

VARY YOUR LENGTHS ACROSS THE EYE

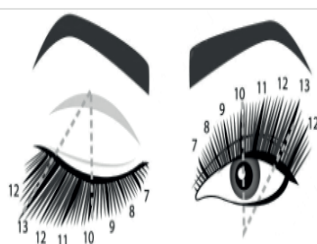
- Lash extensions that are all the same length from inner corner to outer corner is a big NO
- The more lengths used, the better the set will look.
- Generally speaking, no less than 5 different lengths. This is because you want your set to look true to the style of lash your wanting to achieve for your client
- 8mm, 9mm, 10mm, 11mm, 12mm, 13mm

KEEP THE INNER CORNER SHORT

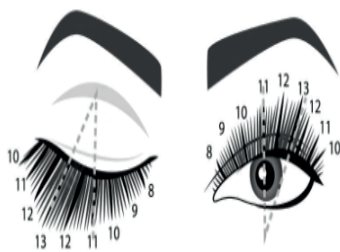
- The shorter lengths are used in the inner corners because naturally this is where the shorter lashes are present
- I generally like to use 8-9mm in the inner corners, despite the natural length of their lashes.
- If you use Lashes that are too long for the inner natural lash to carry, they will start to not only droop, but cause irritation, forcing clients to rub/touch their eye area constantly. Eventually the Lash Extensions will fall out sooner than expected.
- Never exceed 10mm in the inner corners, regardless if you think your clients' lashes are naturally long and can hold it.



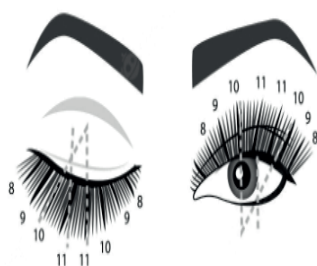
Round



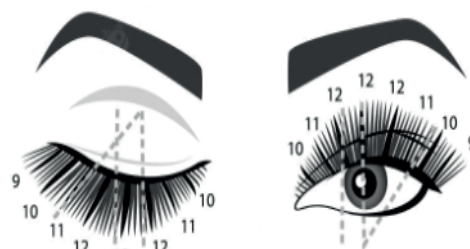
Cat/fox



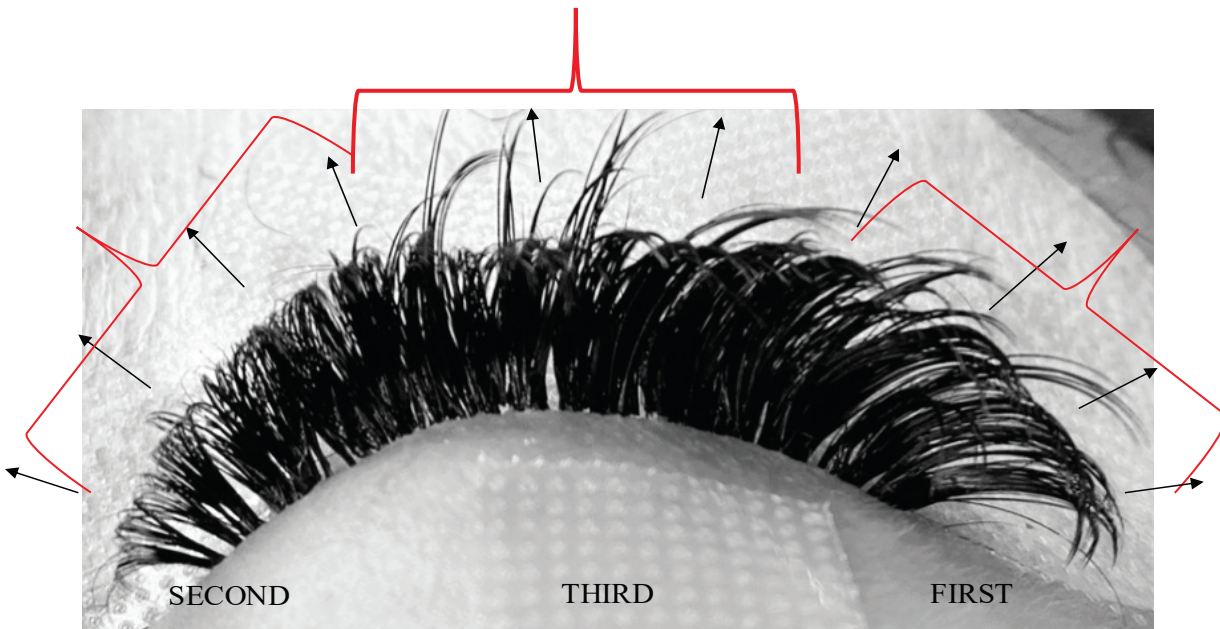
Squirrel



Natural



Doll/cute



Lash Direction

- Precision, mapping, direction all cumulatively create perfection
- In the inner corners until about mid-way, Lash extensions should be applied on the left of the natural lash that way they are able to face an outward direction
- Lashes in the mid-section should be applied directly above or underneath the natural lash, that way they are facing straight ahead
- From the end of the mid-section towards the outer corners, Lash Extensions should be applied on the right of the natural lash so they curl and face outwards
- Lash direction is known as how we angle the position of the Lash Extensions on clients' natural lashes in order to achieve the desired look.
- Lash direction varies from straight, slanted, outwards or inwards or a mixture of different directions
- For example, the outer corner of your clients' lashes may face inwards. If you were to apply the extension and follow it in the same direction it will not look flattering nor will it adhere and wrap around the natural lash properly.
- Sometimes we just have to ignore the natural lash direction

Framing

- Apply an extension on the outer corner of the eye
- Apply an extension to the inner corner of the eye
- Apply an extension in the centre of the eye
- Repeat on the client's other eye
- Continue adding lash extensions in the same order following the lengths you have outlined on your mapping
- Applying the Lash Extensions in this way will ensure that the Lash Adhesive will be dried by the time you reach to that section again.

LASH DIRECTION AND FRAMING

LASH ADHESIVE

- Cyanoacrylate is the main ingredient in ALL Lash Adhesives. This allows for the particles to polymerise when exposed to oxygen and moisture and therefore dry from the outside in
- The Glue Bubble should be replaced every 20 minutes

Speed/Drying Time

- When starting out Lashing, it is important to use a glue with at least a 2-3 second drying time. This allows for the lash to be tweaked into the correct position once applied onto the natural lash as opposed to setting in place instantly
- When you start to notice that you are able to place extensions on quicker than they are drying it is time to purchase a quicker drying glue. (1-2 seconds)
- The speed of your lash sets will not happen overnight, but with constant practice a set that might take 3 hours in the beginning could take 1.5 hours once you have gotten the hang of it

Curing

- Curing is when the adhesive dries all the way through to the centre, by absorbing moisture from the air. This usually takes around 24 hours to complete. Curing is the reason that we don't allow our clients to jump in a pool right after getting their lashes done
- Nano misters can be used here filled with distilled water to ensure that the curing stage happens
- Lash adhesive bonders can be used here which allows clients can get their lashes wet only 3 minutes after the product is applied.
- SHOCK Curing is when water or too much moisture meets the adhesive, causing the bond between the natural lash and extension to instantaneously cure. This makes the bond stiff, brittle and fragile.
- How this happens:
 - Watery eyed clients
 - Not giving your clients natural lashes enough time to dry between lash bath and lash application
 - Not applying primer
 - Using the nano mister too close (should be 30cm away from face)

Temperature and Humidity

- Too much humidity your glue will dry too fast to use a glue with at least a 2-3 second
- Too little humidity your glue will dry too slow
- Air flow and ventilation in the room is important to minimise the harsh fumes for yourself and your clients
- Monitor your rooms temperature and humidity by using a Hygrometer
- By maintaining a controlled environment and keeping humidity in the ideal range, this helps reduce the chance of irritation and other adverse reactions during and after your lash application

Shelf Life

- 3 to 6 months* when not opened, 1 month once opened

LASH
ADHESIVE

NAVIGATING POTENTIAL LASH APPLICATION CONTRAINDICATIONS

Fluttery eyes

Problem: You will most definitely come across clients with naturally fluttery eyes. This could be from them talking, having coffee, or just typically because they are nervous, however will eventually settle as your clients relax. This can be really frustrating, particularly in the beginning of your lashing journey

Solution: If you find that your clients eyes are yet to calm down, using tape from the inner to outer corner of the eye and playing around with either pulling the lid upwards or downwards may help with the prevention of the eye fluttering. Using a heavier tape such as a thick foam tape may be useful too. Another solution can be taping a sterile coin on your client's lid to weigh it down from fluttering

Watery eyes

Problem: As a result of fluttering eyes or other reasons such as natural eye sensitivity or hay fever can cause the wateriness of the eyes

Solution: Using an adhesive wipe on top of the undereye pad just under the lashes of your client will ensure that the tears are absorbed. If your client has hay fever suggest they take an antihistamine next appointment (just remember here, you aren't a doctor)

Eye pads slipping/lifting up

Problem: Throughout the application of the lashes, keep double checking to see if the placement of the eye pad is satisfactory. Keep in mind any movement upwards of the eye pad as this can cause discomfort for your client. If you aren't aware that the eye pad is slipping, you might accidentally lash the bottom lashes.

Solution: Keep cross-checking your work to avoid either contradiction. If any movement of the pad attempt to readjust and retape.

Curly natural lashes

Problem: Clients with super curly natural lashes can cause difficulties especially as a beginner lash tech

Solution: Classic sets are not recommended here because there is not enough straight natural lash for the extension to hold on to. Place the extensions directly on the base of her natural lash but slightly to the side to ensure the extension sits straight and does not turn.

Gaps in lash line

Problem: Some clients may have naturally sparse/gappy lashes from poor previous lash application. Take note here there isn't much you can do here

Solution: Let your client know that there are gaps in their lash line and you will do your best to create a full and symmetric set. If your client has asked for a classic set here let them know that this can tend to look incomplete and recommend a hybrid or volume set so that you can place wider fans in the areas where the gaps are

Droopy/downward facing lashes

Problem: Some client's lashes may naturally be straight and downwards facing. Tape the lid and pull upwards to slightly lift the lashes so that you will find it easier applying the extension.

Solution: Using a C curl (flatter curl) will ensure better retention for the client as the extension will be able to grab on better here. However, a D curl may not allow for the best retention, but the curl will lift the natural lash

CLIENT CONSULTATION

Prior to Appointment

- Generally, prior to a client coming in for their appointment it is best to have an initial consultation VIA text, Instagram DM or your desired platform of messaging
- If you decide to have an online booking system (probably only needed once you start getting busier) you should have an initial consultation form asking/detailing the following:
- Reference photos of what Lash Sets they like and are wanting to achieve
- This is to ensure you have an idea of what they want in your head prior to them coming in.
- Also make them aware to not consume caffeine prior to appointment, no plus ones allowed, ensure lashes are cleaned and makeup free etc.

Booking Fee

- A deposit, also known as a booking fee, is a partial upfront payment that is required by clients in order to book and secure an appointment.
- This should be non-refundable to avoid any confusion and cover any loss of time
- A booking fee of anywhere between \$30-\$50 is reasonable

Prior to Appointment

Step One

Welcome your client, be casual and not too over the top, make them feel comfortable and at home

Step Two

Hand them the Client Consent Form to read through and fill out. This just briefly explains the risks associated to the process of Lash Extensions as well as personal information in case of an emergency etc (as we know there are risks with anything)

Step Three

Read through the completed form and make sure they've answered all questions. Explain the process to them and answer any questions they may have

Step Four

Bring up the photos the Client has previously sent to you and discuss if it will be suitable for them according to their eye shape, health of natural lashes etc. Give them your opinion, whether you think what they are after will be a good choice or explain why not. If that does not dissuade them, do your best to accommodate their request.

CLIENT
CONSULTATION



CLIENT CONSULTATION FORM

CLIENT PERSONAL INFORMATION

Name	D.O.B
Address	Phone

EMERGENCY CONTACT DETAILS

Name	Relationship
Address	Phone

HEALTH HISTORY

Have you ever had eyelash extensions before? YES/NO
Do you have any allergies? YES/NO
Do you wear glasses or contact lenses? YES/NO
Any chronic/ongoing medical conditions? YES/NO
Do you have extremely oily skin/ hair? YES/NO

GOAL OF TODAY APPOINTMENT

MORE LENGHT	MORE FULLNESS
TEXTURED WISPY	STRIP LASH SPIKES
NATURAL	DRAMATIC
CAT EYE	BIGGER EYES

I AGREE TO THE FOLLOWING

I agree to have eyelash extensions applied to my natural eyelashes and/or removed/infilled

By signing this agreement, I consent to the placement and/or removal of the eyelash extensions by the certified eyelash extension professional

I understand that in rare occasions there are risk associated with having eyelash extensions applied to or removed from my natural eyelashes. I further understand that in rare cases as part of the procedure eye irritation and discomfort could occur

I agree that if I experience any of these conditions with my lashes that I will contact the certified eyelash extensin professional that performed this procedure and it my be benficial to have the eyelashes removed

I understand and agree to the after-care instructions provided by the certified eyelash extension professional for the use and care of my eyelash extensions

I understand and accept the consequences of failure to adhere to these instructions may cause the eyelash extensions to fall out and/or decrease the time the lashes will last

I understand and consent to having my eyes closed and covered for the duration of approximately 60-150 minute procedure. Times may vary depending on the set and number of natural lashes a client has

I understand that because of the natural lash cycle, in order to keep them full need to maintain regular infill appointments every 2-3 weeks.

Client Name

Client Signature

Date

BEFORE APPLICATION

- Ensure your client is comfortable, perhaps ask them if they would like a drink of water or if they need to use the bathroom as they will be required to lay down flat for 1-2 hours, perhaps even longer
- Making them feel cared for is important.
- Using a lash pillow allows your clients neck to stay positioned the whole time. Not only it increases the comfort for clients but it saves you from constantly lifting your clients chin as their head slowly tilts down throughout the application without using a lash pillow/head rest
- Have a blanket on hand, or due to COVID restrictions allow them to bring a blanket of their own.
- Having a quiet, relaxing environment ensures your client to feel calm and relaxed as opposed to agitated and antsy.
- The music in the background shouldn't be blaring or too quiet, it should be just right.
- Let your clients know that it's OK if they fall asleep, especially those who attend appointments after a long day of work. This makes your job 100x easier.
- Be open and honest with your clients, explain to them that it's a completely painless experience
- Explain the first few steps up until they close their eyes for the procedure to start to particularly those who are new to Lash Extensions.

STARTING FULLSET APPLICATION

Setting up your station

- Make sure that the Beauty bed has been wiped down and is covered with a disposable bed sheet roll. This should be changed in between every client
- Ensure all tweezers and tools used have been cleaned and stored properly prior to application.

- Ensure the floors have been swept clean, and everything that you are going to touch has been wiped down. For example, the ring light, chair adjustment, trolley etc.

Fill your Lash Tite

- Ensure you have a range of lengths required to complete your Lash Set
- Make sure the lashes are the right thickness for your client (0.10mm for short, thin lashes, 0.15mm for normal lashes and perhaps even up to 0.20mm for thick, long natural lashes)
- Keep the lashes in numerical order so you do not get confused during the process
- Start with the shortest length at the top of the file (usually 8 or 9mm) then work your way down towards the longest length.

Cleanse and rinse

- Although your clients' lashes may seem clean, it is effective to cleanse and wash your clients lashes before applying the Eye pads and Tape. This ensures that all oils and residue from moisturisers etc that are not visible to the human eye are gotten rid of.

Apply 1 pump of cleanser on each eye lid whilst your clients' eyes are closed. Using the

- cleanser brush create circular motions for about 10 seconds each side.

- Once this is done on both eyes start by tilting your clients head to one side

Using the Cleansing rinse bottle filled ensure that it is filled with Saline water.

Hold a tissue near the outer edge of the eye/temple area to absorb the saline water while you are rinsing the cleanser off

Complete on both sides and lightly pat dry, brush with Disposable Mascara Wand and use fan if need be.

BEFORE APPLICATION

Apply the Under Eye Pads and Tape

Second Piece of Tape



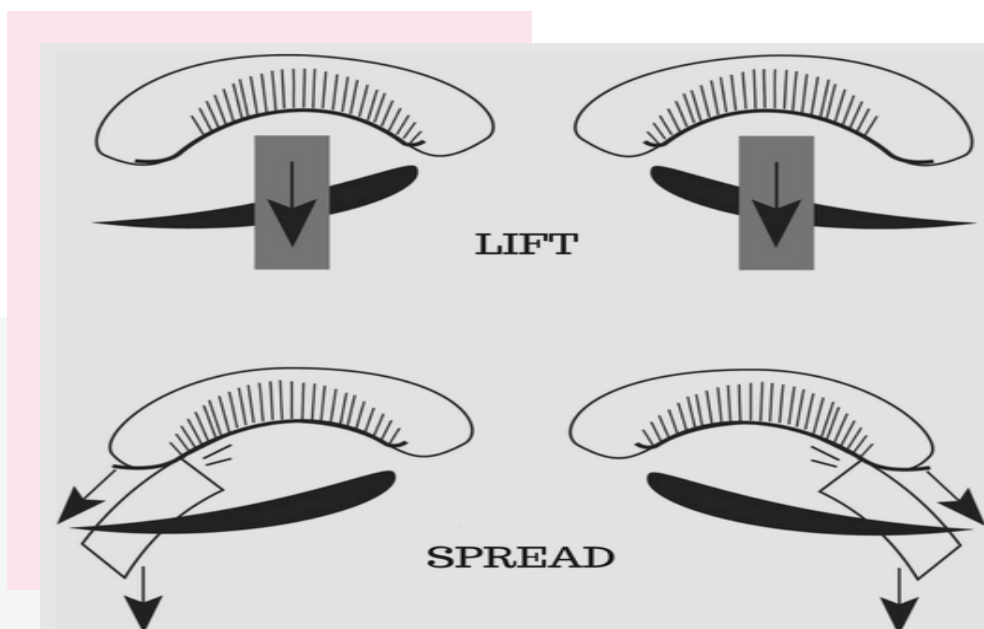
First Piece of Tape

- Shake the Eye Pad packet to ensure both Eye Pads are not in the way when tearing the packet
- Tell your clients to open their eyes and look up at the ceiling
- Holding either side of the Eye Pads edges gently place it over the bottom lashes, not interfering with the client's water line as this will cause irritation
- Do the same on the other eye
- Ask your client if they can close their eyes and adjust the Eye Pads accordingly. You may find the outer edges are sitting too high you will want to lightly lift and move them slightly lower.
- Ask your client if they are comfortable and do not feel like the pads are poking their Eye. Keep in mind that some clients never feel 100% comfortable with the Eye Pads.
- If this does occur, tell them that the Eye Pads are used to cover the bottom lashes so that they do not accidentally get lashed and stuck to the top lashes.
- If you find that your client's eyes are excessively watering, try foam tape instead or just normal micropore tape instead of the Pads

- The micropore tape needs to be placed on top of the eye pads as you will find that without it, some lashes will be peaking through the bottom lash line.
- With One piece of micropore tape you will want to place it from the inner corner of the eye towards the nose bridge and bring it towards the centre of the Lash line.
- You will then use another piece of tape that goes from the outer corner towards the centre of the Lash line.
- You may find there may still be a gap of lashes in the middle that have not been covered.
- A Third piece of Tape may be needed in the middle of the Lash line applied horizontally

Taping the Lids

- It is likely that you will come across Clients needing extra taping on the eyelid area due to their eyelid skin covering over the base of the Lash in which you need to be able to see clearly for correct application.
- When it comes to taping ensure the Clients eyes remain closed
- Ensure the tape is not pulling the skin too tight
- Ensure the tape is not super sticky by applying it to the back of your hand as it could potentially rip the Clients skin if too sticky



- Lifting the skin will allow you to see the base of the lash and exactly where it needs to be applied
- As you're working in the middle section, apply the tape directly above it
- You can apply 2 pieces of tape at the inner and outer corners instead of the middle if you find that works best (there is no right or wrong way, it is what you find best with different clients)
- Applying the tape at the outer corners, directing it outwards and slightly lifting will safely stretch the eyelid, allowing you to properly see the small inner corner lashes.

Lash Priming

- Lash primer helps to achieve faster attachment between the extension and natural lash by dissolving any oil or makeup residue on the lashes.
- It balances the pH level of the natural lashes, ultimately allowing for the best retention.
- Lash primer is applied with a Two Microswabs- One should be placed under one section the natural lashes while the other on top
- Gently glide the primer down the natural Lashes.
- Particularly effective for clients with oily skin
- Without using a primer, the lash extension will be glued to the oil/dirt present on client's eye lashes as opposed to the actual surface of the natural lash

Placement of hands & Adhesive

- Tweezers should be held with at least three fingers for maximum mobility
- Elbows should be tucked in and resting on the Beauty Bed head
- Isolation tweezer should always be held in your not dominant hand, whilst your dominant hand is used to apply the extension

- Hold the Isolation tweezer closer to the base so you have more control and stability
- You should be holding the application tweezer in the mid-section to ensure you have the correct angle for placement
- You can also use the bridge of the client's nose/ rest on your pinkie finger for stability
- The Lash adhesive should be shaken for about 1 minute to ensure it is mixed properly.
- Then apply a small dot of glue should be applied directly onto the strip of tape that is on the Jade stone

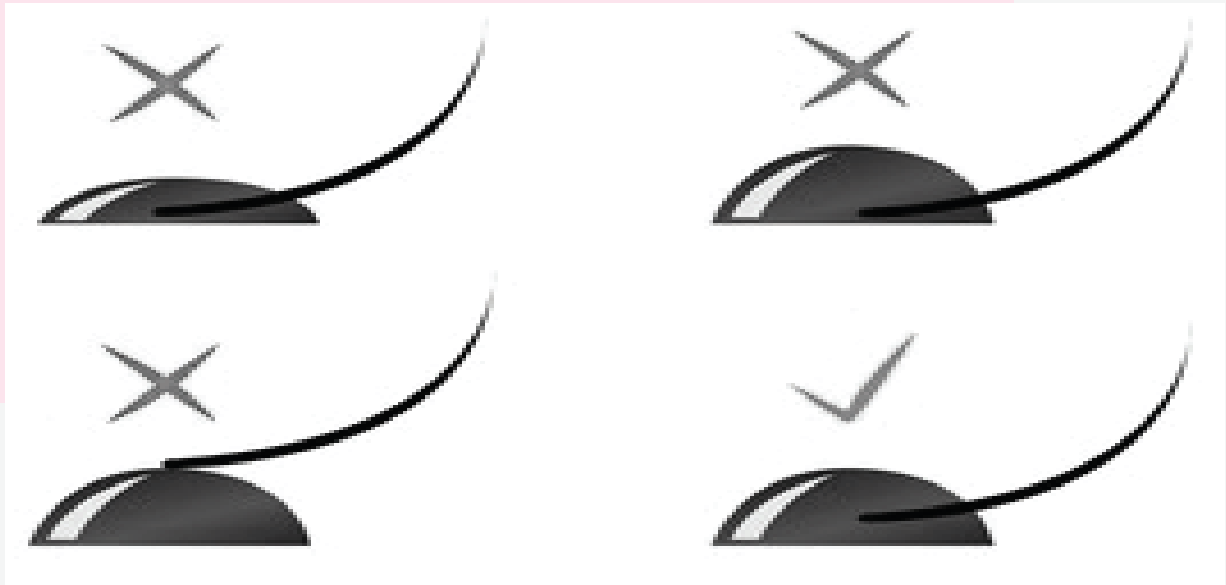


Correct Lash Pickup

- Incorrectly picking up the lashes off their strip can cause the lash to kink and change direction
- With your applicator tweezer not at the tip but, moving the tweezer over slightly so the lash you're about to pick up is in the middle of the foot of the tweezer, grasp on the single lash and roll it towards you

Dip Lash into Adhesive

- Isolate the Lash before dipping the Extension in the Glue
- It is important that you get the right amount of Adhesive on the extension when dipping it in the bubble
- Don't dip the extension into the top or bottom of the adhesive.
- The top and bottom of the glue will be starting to dry out so ensure you only dip into the middle area of your adhesive



Apply The Lash Extension

- The Lash Extension should be applied approximately 0.05-1mm from the base of the lash.
- If the lash is placed too far out from the base, leaving a visible gap it will look as though your client has about 2-3 weeks of lash growth already
- If the lash is applied too close near the base it will cause irritation, discomfort and every time your client blinks it will feel sharp and as though they have something stuck in their eyes
- Working on both eyes at the same time; For example: right eye outer corner, left eye outer corner, right eye inner corner, left eye inner corner, right eye mid-section, left eye mid-section will ensure symmetrical sets and also if your client had to leave due to an emergency it would look better than them leaving with only 1 eye full

Cross Checking work

- Cross checking your work is done by simply using the lash/dental mirror underneath the eye to check if each eye is even, no gaps, the positioning of the lashes and to ensure it is looking how you wanted it to look
- Clients value your attention to detail and particularly like it when you go above and beyond to make sure it is perfect
- This can be done as many times as you like

After the Application

- Gently remove the Under Eye pads and Tape
- Ensure you have brushed through the lashes with the Disposable Mascara Wand to ensure there are no loose lashes that have become detached.
- Fan the eyes for at least 2-5 minutes
- Remember to record the length, type of set and thickness of lashes used for each client
- Ensure that any residual lashes on a strip, must be discarded upon completion of a client's lashes. This is to ensure that no germs or contaminants are passed on from one client to another

Provide Aftercare

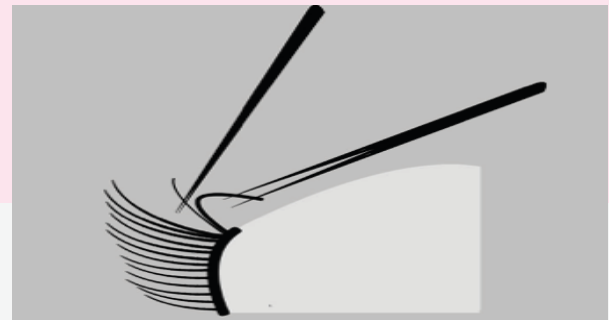
- Instead of throwing the Disposable Mascara Wand, ensure that you give it to your clients.
- Advise them to purchase a Lash Cleanser and Brush to keep their lashes clean and ensure the best retention
- If they do not have a Lash Cleanser, they can mix warm water and Baby shampoo and use a clean Eyeshadow brush in circular motions to clean their lashes
- Advise them to not wet their lashes for at least 24 hours (this includes steam, sweat etc)
- Avoid all oil-based products around the eye area such as sunscreen, makeup removers, cleansers etc
- Remove makeup with water-based products and wipes
- Avoid rubbing, picking your lashes
- Brush them daily
- Do not use mascara, Eyelash Curler
- Book infills every 2-3 weeks to maintain fullness

EYELASH EXTENSION FULLSET REMOVAL

- A Full Eyelash Extension Removal is needed when the lashes are:
- Super outgrown
- Applied incorrectly
- Client wanting to start fresh
- When doing an Eyelash Removal, apply the eye pads as you would with a Fullset
- With a Microswab Applicator apply the Lash Glue Remover at the base of the Lash Extension for a few minutes
- Using the Microswab gently glide down the Lash
- Once all Extensions have been safely removed wipe away any excess that is present on the lash and Eye pad with a Microswab
- Follow by Cleansing and Rinsing with Saline

Single Lash Removal

- Also known as the 'Peel Back' or 'Banana Peel' Technique.
- This is required during an infill particularly those that have outgrown more than 3mm and are starting to point in different directions
- With the isolating tweezer you hold onto the natural lash whilst you peel back the extension towards you
- This causes no damage for the natural lash



Business Registration ABN

- In order to kick start your business, registering for an ABN is necessary
- This process may seem more daunting than it actually is, but it really is just to make it easier to keep track of transactions for tax purposes
- Setting up an ABN does not cost money
- <https://online.abr.gov.au>

Business Name

- You must have a registered ABN in order to register a Business Name
- Choose a business name that is unique, resonates with you and proud to show
- A registered business name helps customers find, identify and connect with your business.
- Try to choose a name that you think customers will remember and that you will not likely change in the future as this will be inconvenient

Business Insurance

- Public liability insurance is a must, although you're not legally required to have this
- It protects you in case your business is brought to court by a client
- If your business is sued, public liability insurance will cover the cost of your legal defence, plus any compensation or settlement money you have to pay out.
- If someone is injured while on your business premises or as a result of your business activities and go ahead with claiming the costs of medical treatment and transportation from you, public liability insurance should also be able to cover your costs.

Bookkeeping

- Allocating time each week/month is one of the most important things you could do for your business in terms of financial aspects
- Keeping track of monthly expenses and the incoming funds is important for when it comes to tax time
- Expensify App allows you to take photos of receipts and it stores it and logs the dates so when it comes to tax time you are able to categorise all business expenses accordingly and your job will almost be done for you

What to charge and when to increase prices

- Practice makes perfect. Therefore, when starting out, it is important to charge accordingly
- It is always best to charge what you think you are worth at that given point in time.
- Be sure this amount covers all costs of products used, time and skill
- Initially offer an introductory price of 50% off for 1-2 months
- This will allow you to practice on as many people as you can with all different types of lashes whilst at the same time build up a clientele of regulars returning every few weeks for infills
- When you feel as though your quality of work and skill is improving increase your prices to still be competitive in the market
- Remember that this price does not always have to stay put, as you get better and better you can always increase them

YOUR BUSINESS

Social Media

- Your social media account is your most powerful tool. It needs to be understood and used properly to ensure you boost your potential client exposure
- Facebook, Instagram, Tik Tok are all ways to successfully build a reputable and flourishing Lash Business
- Ensure your Instagram Bio is kept short, succinct and meaningful.

Adding the #Lashes in your bio will ensure that your account pops up for anyone searching with that tag. It is also good to have your location (suburb) on so they know where abouts you are located prior to booking

- Write the information you want in your bio on your notes, that way you can have line breaks and it can look professional and neat. Copy and paste it when you're done

Target Audience

- A target audience is a group of people we intend to market to.
- In this case, our target audience are people who are wanting to increase their overall confidence by being able to wake up and feel good and already put together with little to no effort
- It is important to post content in line with our target audience interests.
- These include: Makeup, Lashes, Art, Beauty, Skin Care, Fashion

Advertising

- Advertising on your main platform of usage such as Instagram can be particularly beneficial
 - Your insights will be able to tell you the demographic of the people viewing your content.
- Therefore, when advertising you will know exactly the age, gender and
- location of who you want to be targeting
 - Set a budget to promote your best work at least once a month.

Advertising can boost your exposure and overall engagement

Online Booking System

- Acuity Scheduling/ Timely are online system where you can set up an easy platform that clients can see the type of services you offer as well as the prices. Acuity Scheduling/ Timely are online system where you can set up an easy platform that clients can see the type of services you offer as well as the prices.
- It comes in handy once you start getting busier as it does the job for you.
- For basic features of the app, it is free, or you can pay a monthly fee that sends clients text/email reminders about their appointments
- This saves time and effort and allows you to switch off after work as opposed to constantly replying to clients after work hours

THANK
YOU

and Goodluck with your Lashing Journey!